



CTESCOA

CHEMBUR TROMBAY EDUCATION SOCIETY'S

**CTES**

**COLLEGE OF ARCHITECTURE**

N.G. ACHARYA MARG  
CHEMBUR, MUMBAI  
400071

91-22-25217343

info@ctescoa.com

www.ctescoa.com



# FORWARD

Every moment leads us to reflect on what has happened before and what lies ahead. This moment becomes the in between path of our present and future. To improve our past and innovate our future, we look within the interstice. As the modern world is becoming increasingly elusive, the interstice exists within the urban lifestyle. The interstice surrounds us all in the composition of patterns, light, and peeking through the gaps in leaves. The magazine is exhibited as the gap, or interstice of many thoughts. The discipline of design is thus brought into dialogue with a range of architectural, social, philosophical and cultural perspectives. Our work is neither all-embracing nor the ultimate statement of interstice, but something that is moulded and shaped, as the process of understanding of the in-between is consistently ongoing.



CHEMBUR TROMBAY EDUCATION SOCIETY

GOVERNING COUNCIL

Shri. Leeladhar B.Dake (President)  
Shri. Ramesh A. Mhapankar (General Secretary)  
Shri. Subodh S. Acharya (Joint Secretary)  
Shri. M.N. Ramamurthy (Treasurer)  
Shri. Deepak N. Chauhan (Member, Internal Auditor)  
Shri. Shailesh Sahshikant Acharya (Member)  
Shri. Sandeep R. Chavarkar (Member)  
Shri. Anil B. Chauhan (Member)  
Shri. Parag L. Dake (Member)  
Shri. Rajiv R. Mhapankar (Member)  
Shri. Sharad N.Patil (Member)  
Shri. R.S. Pandey (Member)  
Shri. Harshavardhan R. Pandey (Member)  
Dr. Maya Parihar Malhotra (Member)  
Shri. Shashikant N. Acharya (Nominees, Acharya Udyog)  
Shri. P. Venugopalchari (Nominee, Vijayram Memorial Trust)  
Mrs. Priyadarshini V (Nominee, Lakshmi Narayan Seva Sangh)

CTES COLLEGE OF ARCHITECTURE

MEMBERS OF COLLEGE DEVELOPMENT COMMITTEE

Mr. L.B. Dake (Chairperson of management)  
Mr. M.N. Ramamurthy (Nominee of Chairperson)  
Mr. Subodh Acharya (Nominee of secretary of management )  
Mr. Deepak Chauhan (Secretary of management )  
Dr. Maya Parihar Malhotra ( Secretary of Management)  
Ar. Tanvee Joshi  
Ar. Shweta Parab Ekwade  
Ar. Umesh Mallya  
Ar. Sunanda Satwah  
Ar. Pooja Shah  
Ms. Supriya Mantri  
Mr. Anil Gachke  
Mr. Mahesh Nerurkar  
Ar. Shringarpure  
Mr. Milit Satra (Secretary of college student council)  
Mr. Soham Kashikar (Secretary of college student council)  
Ar. Alka Tawari (Principal)  
Ar. Pushpagandha Shukla (Co-ordinator of IQAC)

1	Foreword
2	Governing Council
3	Index
4-5	Principle's Desk
37	Masters
50-53	Guest Lecture Insights
76	Archibrigade

DESIGN DISSERTATION	
30-31	Fusion Of Art And Technology
32-33	Reconsuming The Idea Of Waste: A Solution To Upcycling
34-35	Land Of Delineation: In Search Of Ayodhya's Oneness

INDEX

EXTRACURRICULAR SECTION

38-39	Discovery of Mumbai
41-45	NASA
58	Movie Review
56-57	Electives
54-55	Artworks
66-67	Earth Day; Poem & Poster
68-69	Earth Day; Essay
63	Convocation
59	Exhibition
62	Sports
60-61	Archinova
49,77	Artwork
70-71	Photography: Shutterbugs
78	Student Council
79	Editorial

ARCHITECTURAL DESIGNS

6	Pavilion
7	Row House
12-13	Artist Village
18	Transit Hub
19	Star Hotel
26-27	B.E.S.T Staff Quarter

ALLIED DESIGNS

8	Anomaly
14-15	Kiosk
20-21	Landscape

ARTICLES

9	An Explorative Medley
10	Kaleidoscope: A Paradigm of Design
11	Chaos' Charisma
16	A Ray Of Hope
17	Poetry A Continuum
22-24	Discovering Mumbai's Public Spaces In Urban Interstices
28-29	Pawan Rao
36	Lucidity
40	Interstice As An In-Between Space
46	Interstellar; Interstice
48	Rays Of Positivity
64	Lockdown Victories
65	A Muse Into...
72-73	The Power Of Okay
74	Design More Than Spaces
75	My Gorgeous Greens

## PRINCIPAL'S DESK

-Prof. Alka Tawari



This year, CTESCoA completed its 7<sup>th</sup> year of establishment. The year was eventful and will be remembered in history of humanity as a huge struggle of science with a pandemic. The world is at war with a tiny virus, which has wreaked havoc all over the world - in developed and developing countries alike. Our established systems were not prepared for any of this, and like many other things, education at all levels suffered immensely.

Despite this, the creative human spirit endured and found new ways to grow and connect with others. From playing tennis on rooftops to putting on a collective musical performance from balconies – there are several heart-warming accounts of people coming together while stuck in quarantine to life each other up. This extended to education as well, where we learned the true value of empathy and helped each other navigate untested waters successfully. Sure, we missed out on being together in the physical realm, but we found and learned new ways of interacting and flourishing together in the virtual realm.

Interstice - the theme of this year's magazine could not be more opportune; when the world was on a great pause and took notes on identifying what is meaningful and what is superficial. This pause, these moments of retrospection and introspection, helped magnify the gaps in various aspects of our existence.

Glistening edifices of contemporary times like office buildings, shopping malls, hotels, airports and educational buildings – were all deserted. Architecture again reached at a crossroad of utilitarian vs extravagant; low tech vs high tech; sustainability vs progress; rural vs urban; curative vs preventive.

India, a land of artisans and skilled construction work force, with its own evolved societal architectural language, was moving towards adopting high tech solutions. Each region of India had developed a very strong material palette and relative technology. Adopting centralised planning principles that overlooked a decentralised development model, was not a solution for India - where 65% population still lives in 65,000 villages\*(as per 2011 census). Low tech, vernacular methodologies must be promoted in India to find relevant solutions.

It is important to note, that most of the rural belt in India was relatively safe during the pandemic while urban centres were severely affected. High density urban sprawl, coupled with unhealthy lifestyle, pollution and contaminated water and food, played a major role in the spread of the pandemic. As curators of the built world that affects everyday life, how can architects use their profession to do better? When people are struggling for daily sustenance while being stuck at home, who then has the luxury to think about a bigger and iconic building?

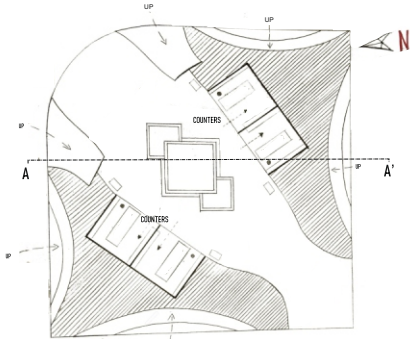
Architectural education needs to discuss these points to open eyes of young minds, as they begin their journey to convert theory to practice.

Thoughts and dreams grow on the bed of wisdom of a community.

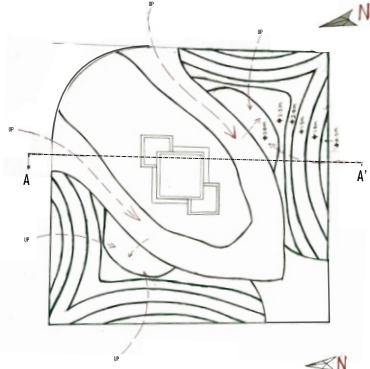
ARCHITECTURAL DESIGN SEM II (2019-20) PAVILION

The concept of the design emerges from the use of amphitheatre as a peripheral seating space which provides view to the surrounding, while the centre area is occupied by the retail spaces and display area. The pergolas create an interesting pattern overhead and provide semi-shade to the users.

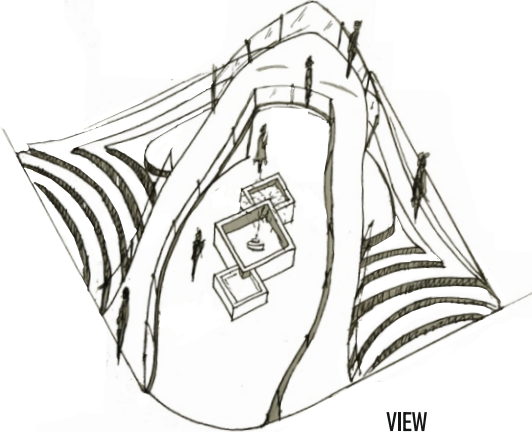
-Bhavesh Patre



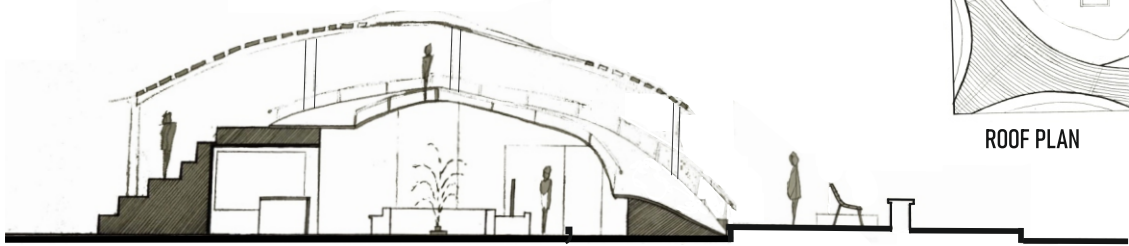
SITE PLAN



ROOF PLAN



VIEW



SECTION A-A

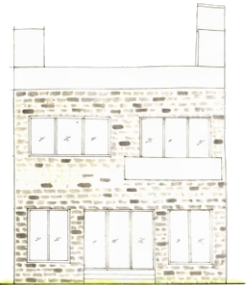
ARCHITECTURAL DESIGN SEM II (2019-20) ROW HOUSE

The spaces are designed for easy circulation for the six primary users of the row house. Since there is minimum inlet of light and air, from the two longer sides, the south and north side are designed with maximum openings. And a vertical garden is added to create a welcoming facade.

-Nupur Naik



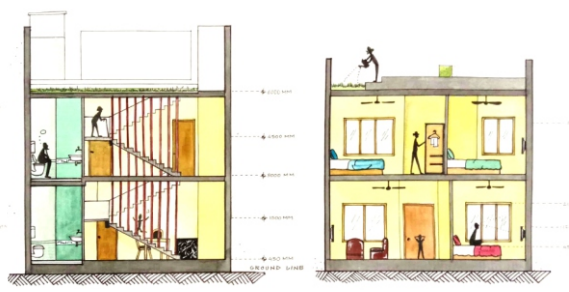
FRONT ELEVATION



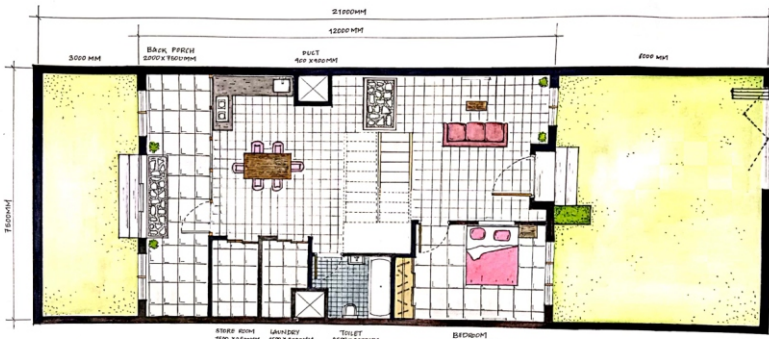
REAR ELEVATION



FIRST FLOOR PLAN



SECTIONS



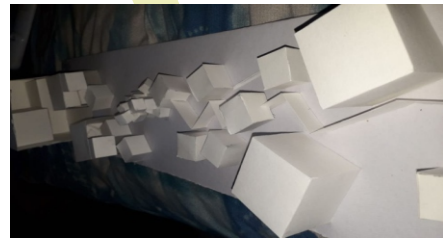
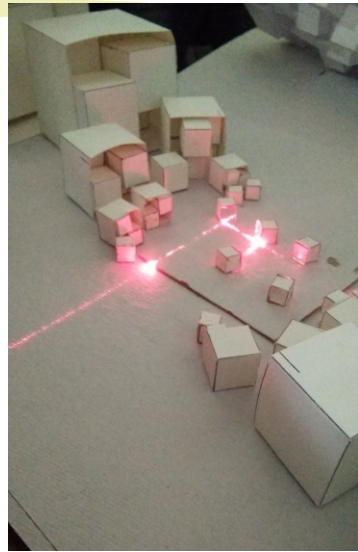
GROUND FLOOR PLAN



MODEL



## ALLIED DESIGN SEM II (2019-20) ANOMALY



This exercise explored the idea of irregularity in form due to an "anomaly". The cube as a volume when subjected to irregularity, reacts and responds. In the process of breaking or subdividing the volumes, the last division of volumes produces/ emits an illumination, a reaction to change. Hence, the light becomes the anomaly which ends the process of division.

-Anjali Lodh

Exploring the impact of the catalyst on a volume, Y shaped cuts were made on a cube which resulted in its breaking into pieces with varying dimensions. The catalyst is not a single entity, but a form in itself that could grow in scale and multiply. Pieces with smaller dimensions were placed on the periphery and the larger were placed towards the centre of the cube. When the cube gets divided, the pieces disperse because of absence of support. And when the catalyst is removed, it has only one probability of getting it into its original form.

-Bhavesh Patere



## AN EXPLORATIVE MEDLEY

- Aditi Nikam  
2nd Year B.Arch

Interstice exhibits a binary impression of acknowledgement, depending on the ambience it exists in. Even if being on the verge of negligence it never fails to grab the sight of curiosity.

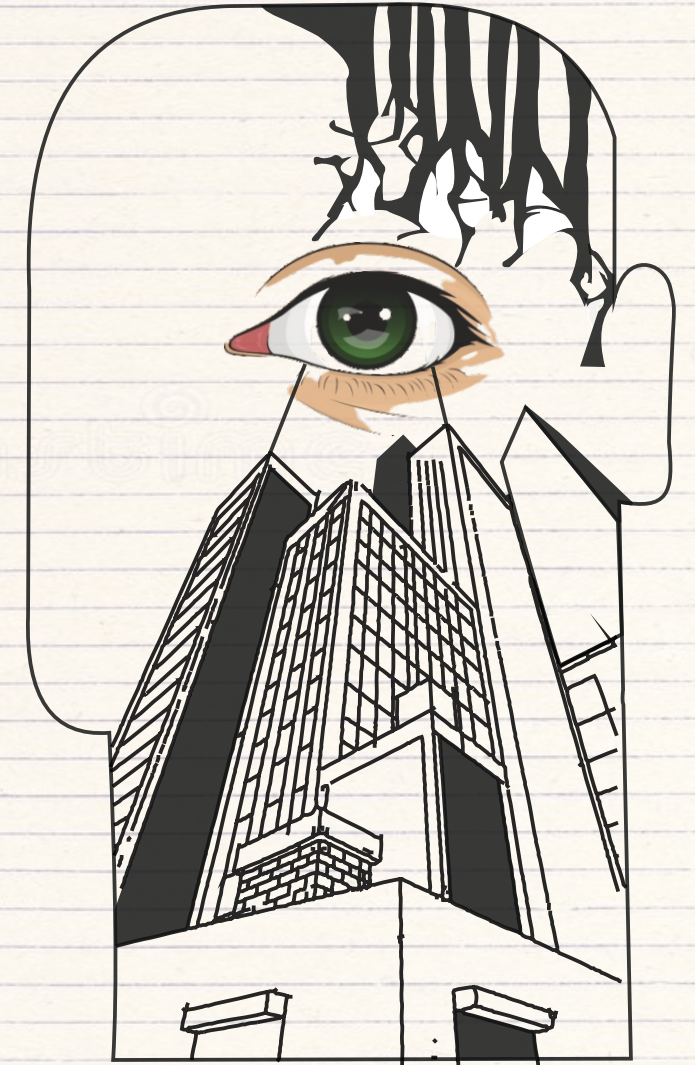
It manifests as the line that exists between the tangibility of a space and the void that carries questionable permutations of inferences.

How does one realize the function of the buffer areas between two spaces? How does one discover an anthill in the crack amidst the soil? How can a void create an average yet a snoopy appearance? It all consists of people's perception and the experience that it attempts to deliver.

Interstice not only makes you postulate its actuality but also provides you with a variety of conjectures. Right from the urge of defining its form, to the conclusion of its association, one encompasses the journey of its apprehension from a broad range of perspectives. It procures several perceiving experiences including its existential overview.

The scale of the interstices illustrates the variety it depicts in terms of its function. The intervening objects, tangible or intangible, however, endeavor the literal as well as figurative responses.

Even when the void that sufficiently coordinates with the foreground leading to an intuition, the interstice is the exemplum witnessing the inquisitive tableau.





# KALEIDOSCOPE A PARADIGM FOR DESIGN

-Ar. Sunanda Satwah

Have you ever pried open a seed? Have you found the blueprint of the huge tree hidden within its kernel? What is it about silence that fosters creativity? There's a Zen saying, 'It is the silence between the notes that makes the music.' Entire forests grow in silence. Nature grows in silence. It grows from kernels of apparent nothingness. It is the hollow vessel that holds liquid within & quenches our thirst. It is the crack that let's light in & illuminates a corner.

It's in the crevices of our understanding, that our thoughts breed & spread their wings. Space & Time- the seeming nothingness that allows nature & ideas, alike, to birth & grow.

Everything is made up of atoms. And all atoms, with their electrons, protons & neutrons, consist of 99.99% empty space. The Universe is expanding- It is one huge limitless expanse, like imagination with no limits.

A great void lies within us, around us, as incubator- waiting for ideas to germinate & grow; & yet we rue the silence, the solitude, crevices, cracks, emptiness, gaps, the supposed negative spaces in a figure-ground world of black and white.

Come, embrace the kaleidoscope of life. The kaleidoscope, an optical instrument of light, reflection & space, works on the principle of reflecting mirrors. Bits of colourful beads introduced within the hollow triangular cavity, add drama with their ever-changing patterns. It is an interesting exercise in fractal geometry. However, what often gets overlooked in the colourful display, is the central hollow space. It is the space between the mirrors that allows for free movement, reflection & the emerging patterns.

Next time you want to crank up creativity, think kaleidoscopically. Embrace the nothingness of being. Meditate. Empty your mind. Let the ideas float. Reflect. Shift your perspective. Change the parameters. Until, you finally begin to see- patterns that please



## CHAOS'S CHARISMA

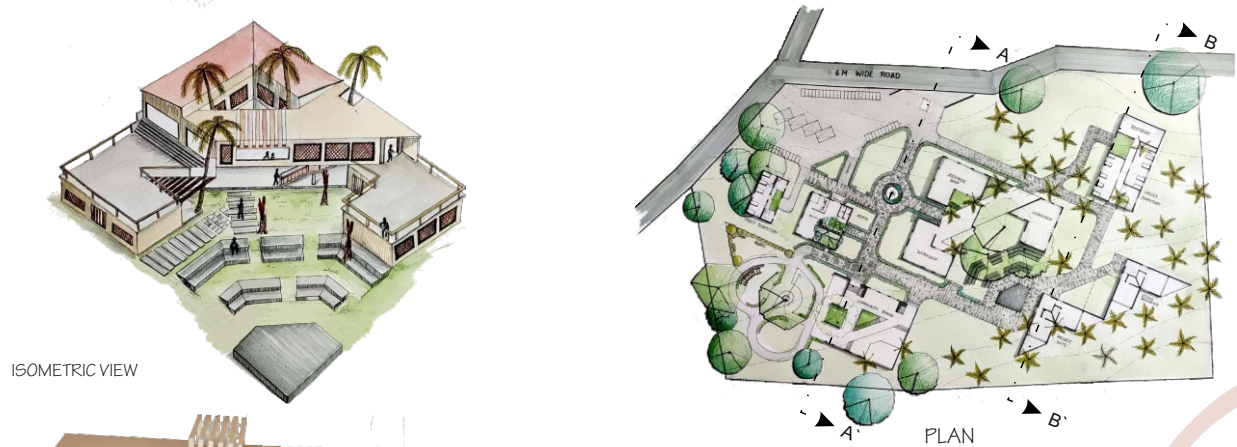
- Anoushka Janah  
3rd Year B. Arch

I live in the part of Kolkata which is not hassled by the incessant honks of passing cars and vehicles. It has a calm and soothing atmosphere. Though it lies within the main city, it's an appropriate society for families. You find a few early morning joggers who depart for their jobs around 8 AM and return about 8pm. That's all the movement you will observe. COVID-19 has put a stop to even these minimal activities. The only signs of activity these few past months were people stepping out for essential services.

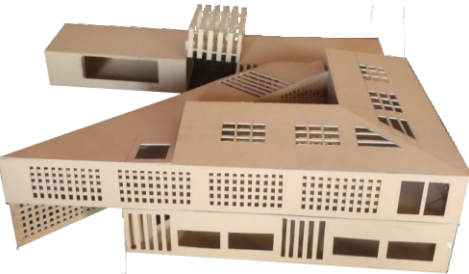
This neighborhood transforms into a place of charismatic liveliness during the celebration of Durga Puja. All the streets light up with food stalls and kiosks at every interval and a melody that reminisces tradition fills the air. People of all genders and age are found in their various small groups around every stall in the street savouring the mouth-watering food. Everyone gathers to offer Anjali (offerings) and goes around visiting different pandals (temporary structures set up to pay homage to Maa Durga). \*\*Once tired faces light up with excitement and enthusiasm during this time of the year. The kids wake up by themselves excited, envisaging and preparing for a great day ahead. The ones who disliked going out of their houses can no longer stay in. The people who once didn't have time to stop and acknowledge one's presence with a simple 'hello', sit at the society pandals chatting with their neighbors and friends. During Durga Pooja, people in the city come together, take a break from their daily hectic life and celebrate. Durga pooja holds a special place in the hearts of bengalis, pandemic or no, this festival brings a sense of hope and reassurance that we will recover and cherish our traditions.



ARCHITECTURAL DESIGN SEM IV (2019-20) ARTIST VILLAGE



ISOMETRIC VIEW



MODEL

The brief was to design a community centric space for people belonging to artistic background of Anegundi. The proposed design incorporates the use of existing trees within the structure and as a natural shading element for courtyards. Design is further developed by dividing the square diagonally to increase the surfaces towards the view point of the river. Natural ventilation and smooth circulation within the premises is taken into consideration.

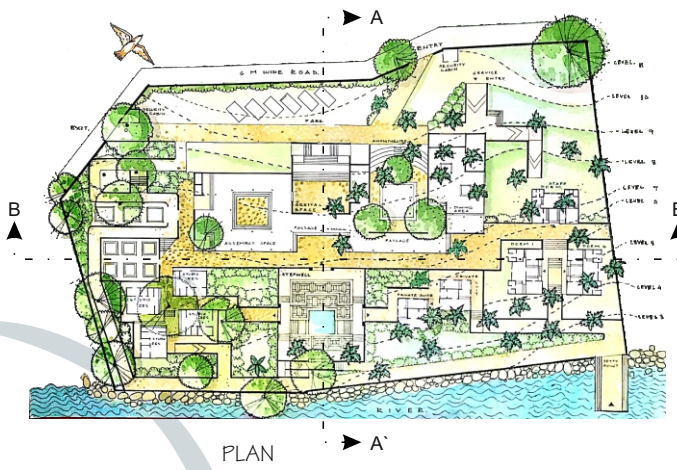
- Jayesh Patil



SECTION BB'

SECTION AA'

ARCHITECTURAL DESIGN SEM IV (2019-20) ARTIST VILLAGE



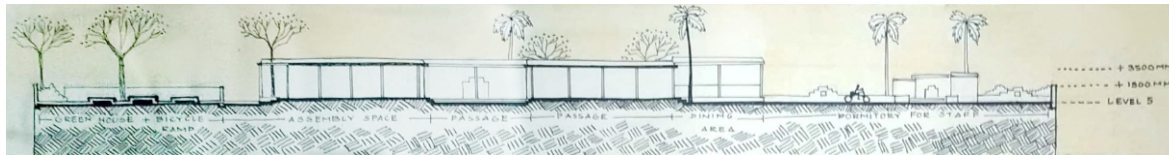
PLAN

The site for Artist village is a gently sloping site hill overlooking the River Tungabhadra in Anegundi. The natural contours are used for a series of terrace garden and sunken courtyards of which are located an assembly space, a passage leading to Amphitheatre and a dining Area. The idea was to have sunken courtyards and green roof to ventilate and maintain the micro climate within the space. Green roof also helps as the thermal mass reducing the solar heat and the result avoids the use of air conditioner by providing cross ventilation. Natural lighting and ventilation is brought through skylights. Series of landscape with stepwell are introduced to enhance the beauty of site. For a site which has essence of our tradition, it is good to come back at time where architecture is more of an art which responds to the context and being appealing to the users.

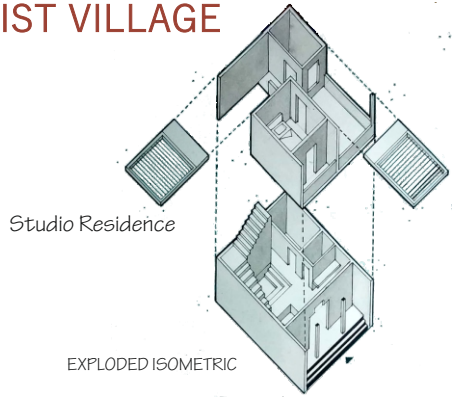
- Sahil Baria



SECTION AA'

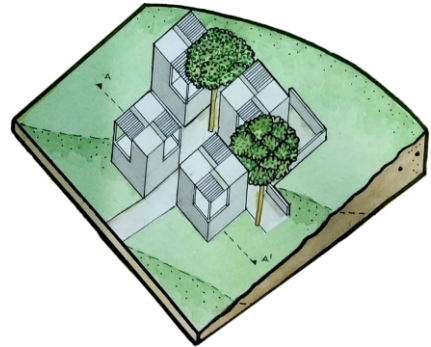


SECTION BB'

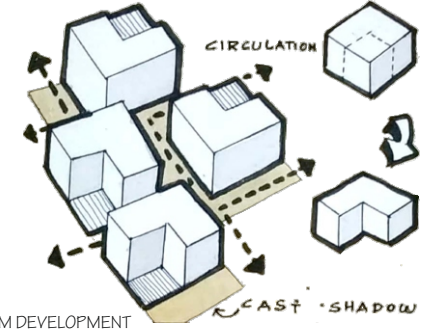


Studio Residence

EXPLODED ISOMETRIC



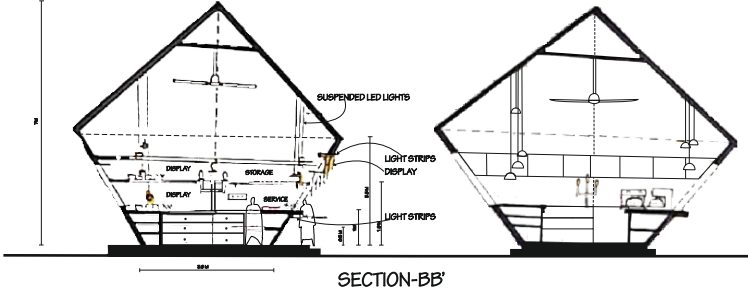
ISOMETRIC VIEW



FORM DEVELOPMENT

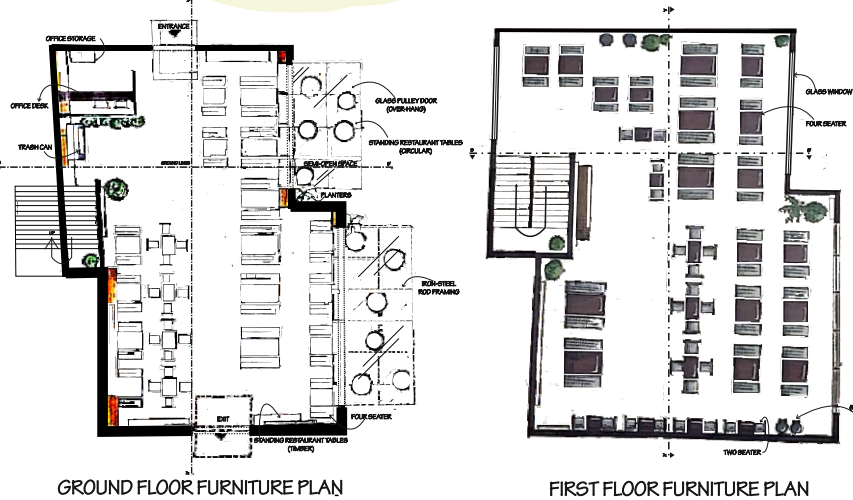
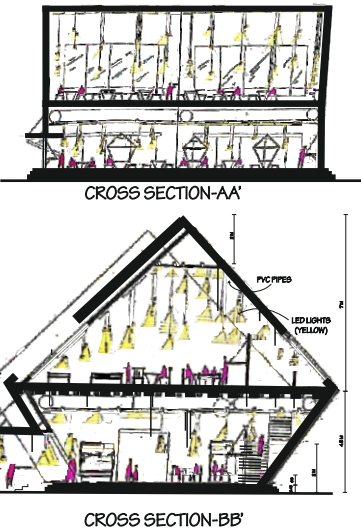
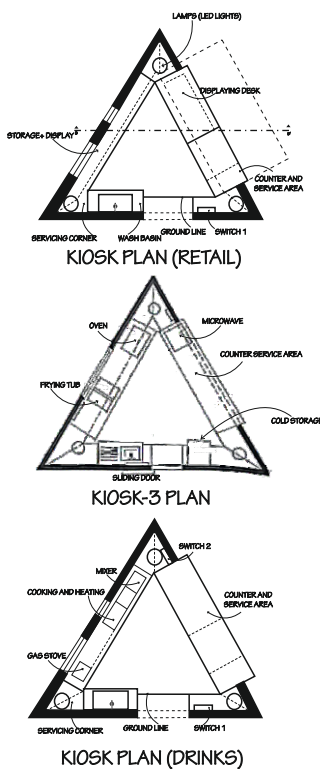


ALLIED DESIGN SEM IV (2019-20) KIOSK

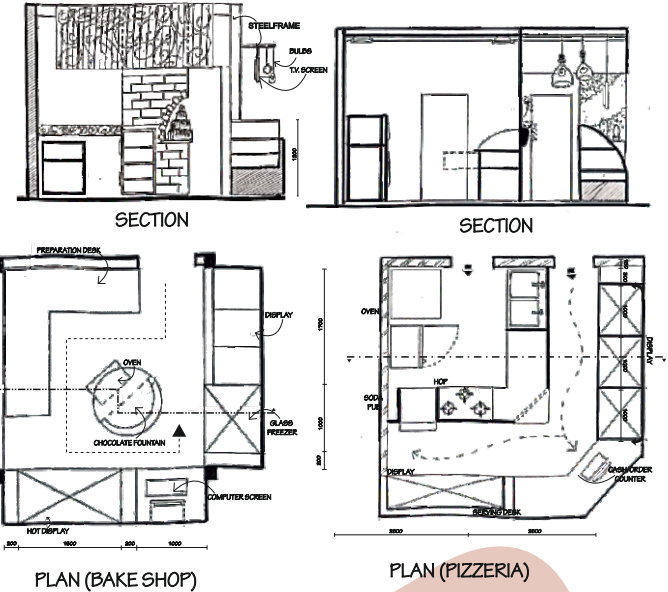
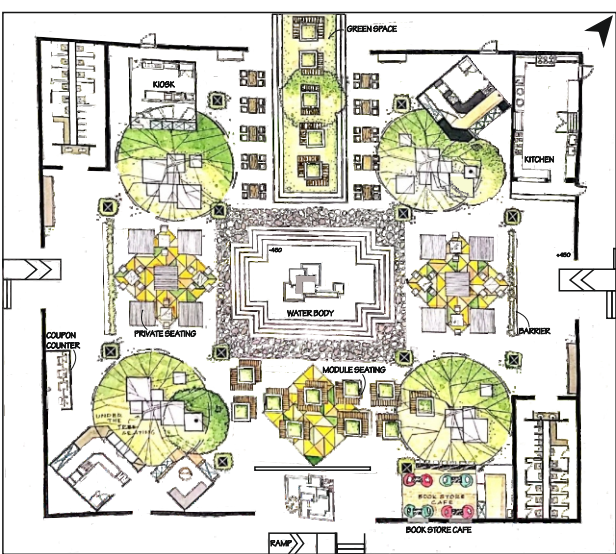
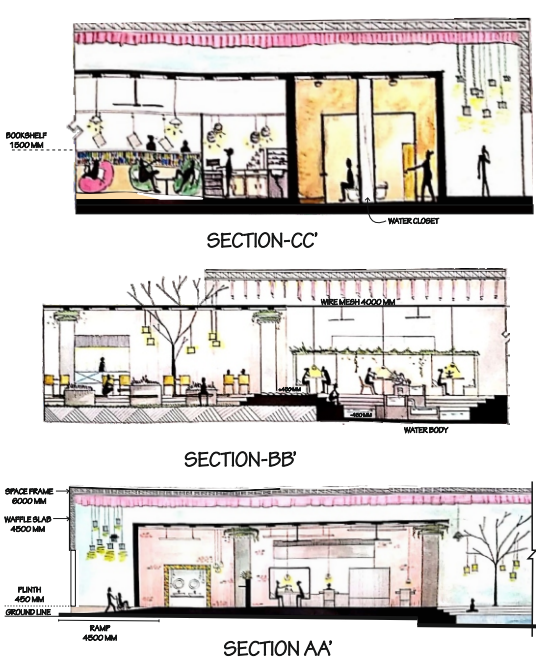


The design emerged after experimenting with squares, its sides and repetition of the evolved form. The structure is a composition of a square module which is continued in the kiosk with six-seater seating. The repetitive form in the ceilings and wall ornaments have been held together by PVC pipes. With use of different materials like PVC pipes, timber posts, metal, boulders, jute ropes and green plants, the design aimed to achieve an aesthetics of an industry.

- Aparna Rai

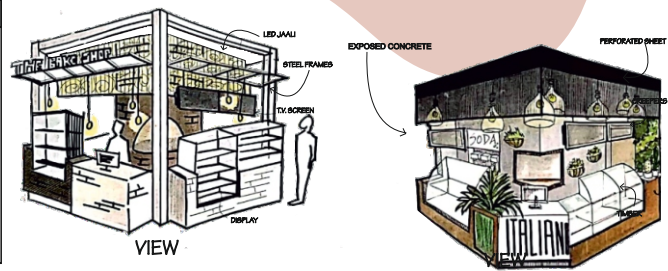


ALLIED DESIGN SEM IV (2019-20) KIOSK



The brief was to design an interior of a community dining hall. The proposed design encompasses the experience of landscapes and in-between spaces in it. In addition, more modular seating will be used as informal seating zones, with formal seating built in a grid pattern. Existing landscapes have been enhanced by introducing break out spaces on different levels, while taking light and ventilation into consideration.

-Sahil Baria







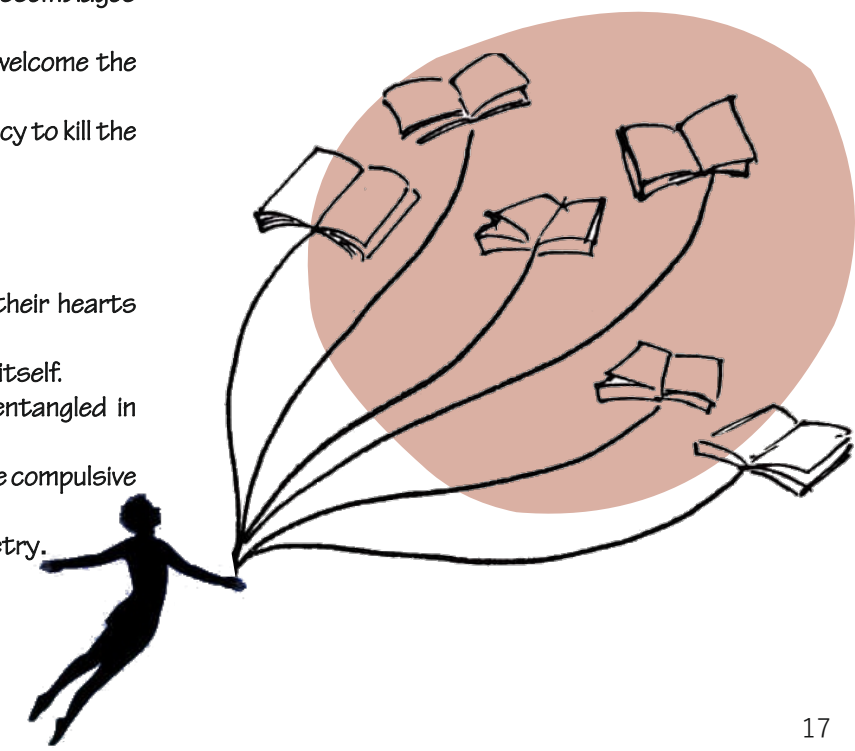
## THE RAY OF HOPE

-Ar. Tanmayee Wagle

## POETRY- A CONTINUUM

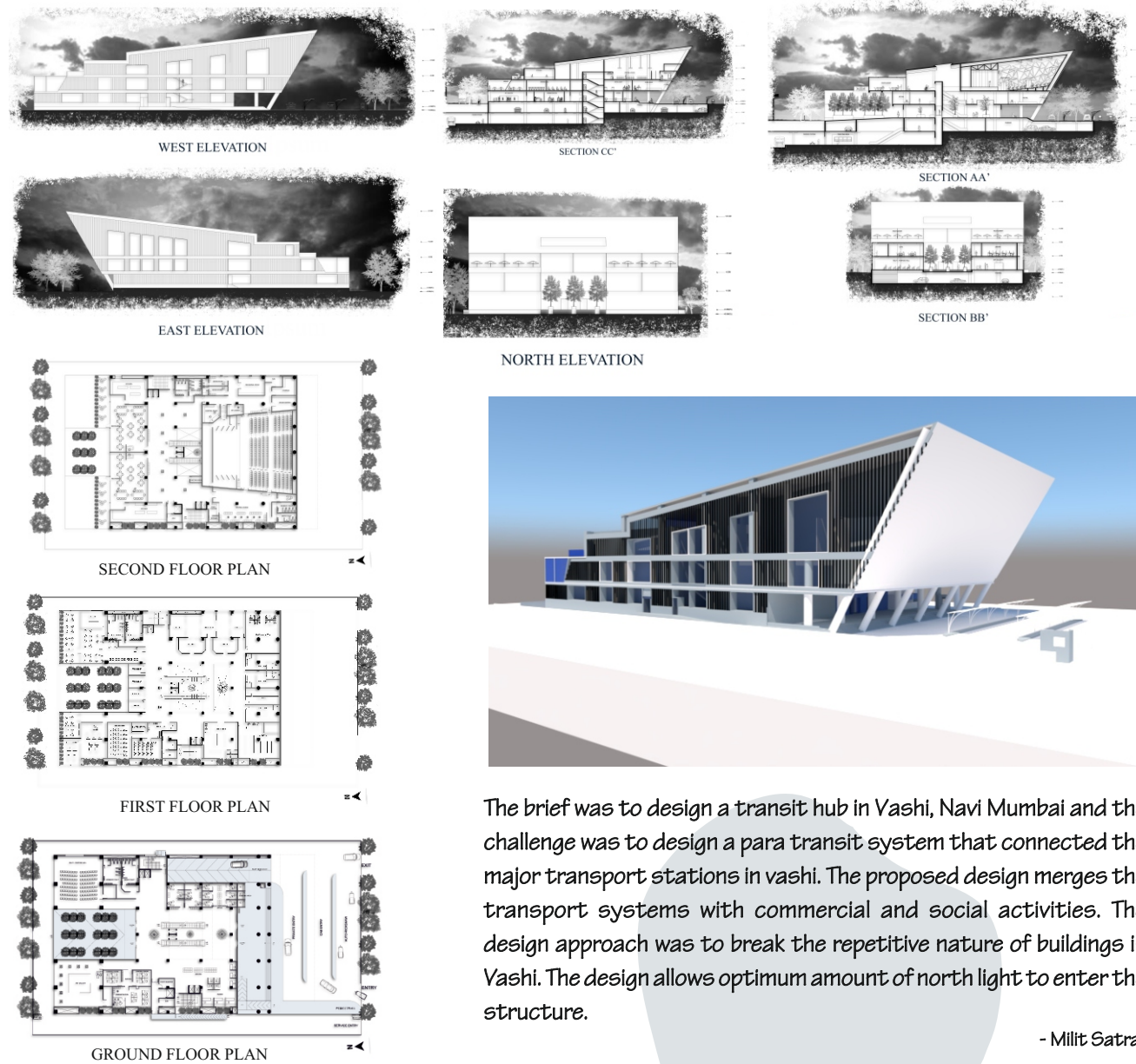
-Garima Sakwar  
Second Year B.Arch

An intervention to the gap of loneliness. Depressive.  
Let bitter medicines dissolve or, madness can create its final decision.  
A bridge between the gaps of thoughts.  
What is identified to be rational flees.  
Enough to find out from the burning of its wings and Youth.  
Say, propulsion a illusion beneath the hat.  
you recognize you're being fooled however why relish such spectacle or,  
higher relish than masking the reality.  
Say, a glimpse through associate interstice—from Whitman's poetry.  
An invasion to the laxness of the day.  
associate intercept to the chaos of the soul.  
A reminder that we have a tendency to aren't assemblages forever wanting.  
A poetry incompetent to the course, enough to welcome the rain of unhappy realizations.  
We square measure savage gods. we have a tendency to kill the detritus of truth, those are, lies.  
Consider this poetry as an obituary.  
we have a tendency to deal the cards of fate.  
we have a tendency to intervene, to measure.  
we have a tendency to perforate our stones to their hearts therefore cold.  
After all, we have a tendency to square measure life itself.  
we have a tendency to become agnostic souls entangled in caves of shadows.  
Say, we have a tendency to forever unfree within the compulsive dimensions of ourselves? smitten, for instance.  
The answer to this question, can only be given by poetry.  
So, Let poetry be continuum,  
To fill all of the interstices of our life.

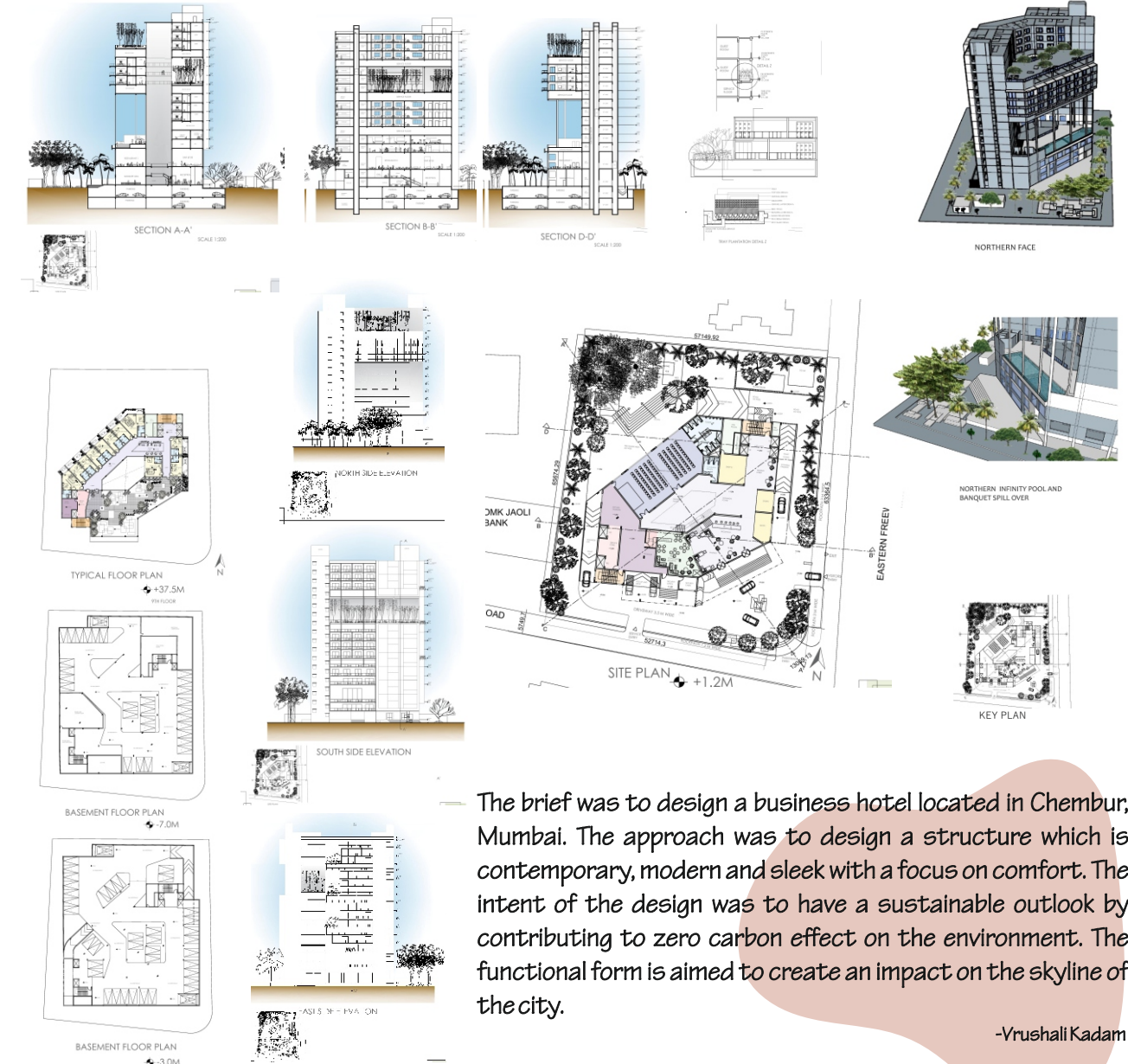




## ARCHITECTURAL DESIGN SEM V (2019-20) TRANSIT HUB

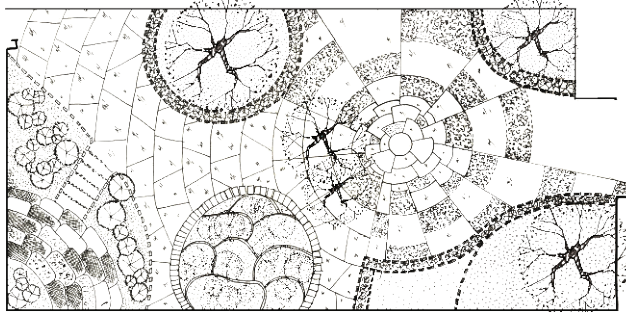


## ARCHITECTURAL DESIGN SEM VI (2019-20) 3 STAR HOTEL





ALLIED DESIGN SEM VI (2019-20) LANDSCAPE



PLAN

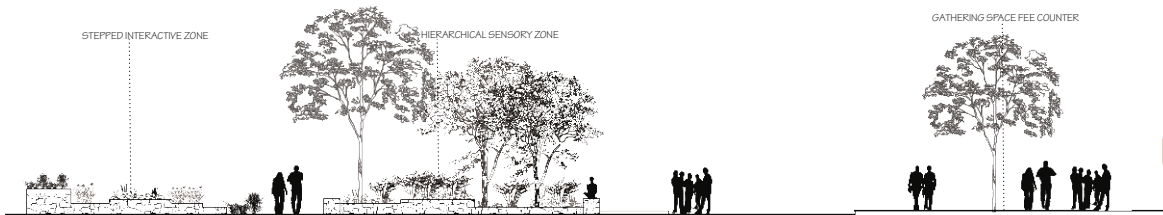


PLAN

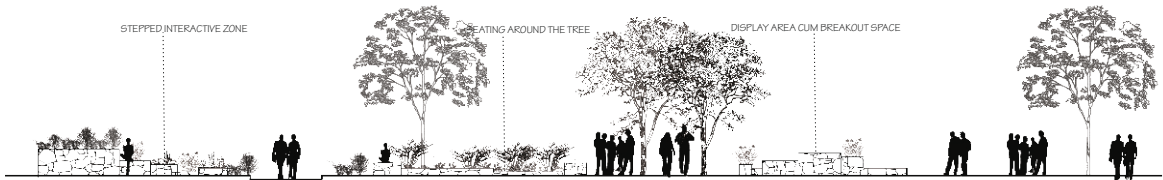


The brief intended to re-design the courtyard of an educational institute, while exploring the possibility and extent of courtyards as a connector between multiple functions and activities. Organic and free flowing lines create interesting interactive spots in the courtyard.

- Chhavi Rautela



SECTION - BB'

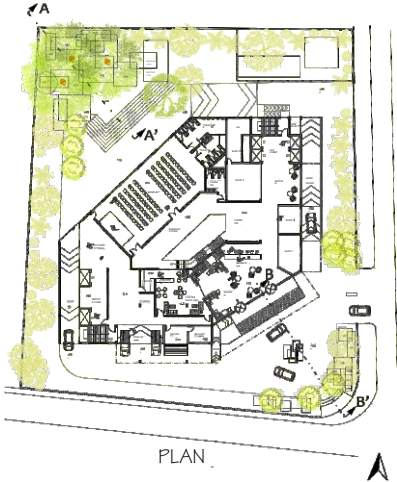


SECTION - AA'



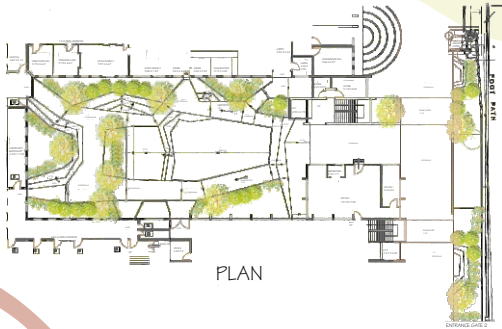
ALLIED DESIGN SEM VI (2019-20) LANDSCAPE

The landscape design demanded a separation and a sense of synergy of the built and unbuilt form evolving into seamlessly flowing space that provided close and open spaces all in one design. Giving privacy to the staff rooms and management offices the place still had to be the most lively space in the college. The project mainly focuses on barrier free design which contains ramps that are switched at each level. The levels are manipulated to have vantage points from the central entry and number of sitting spaces.

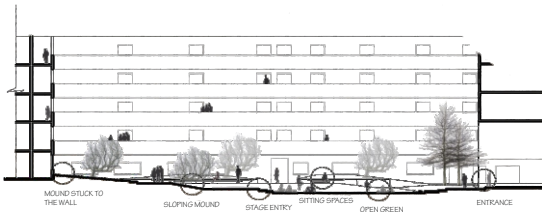


PLAN

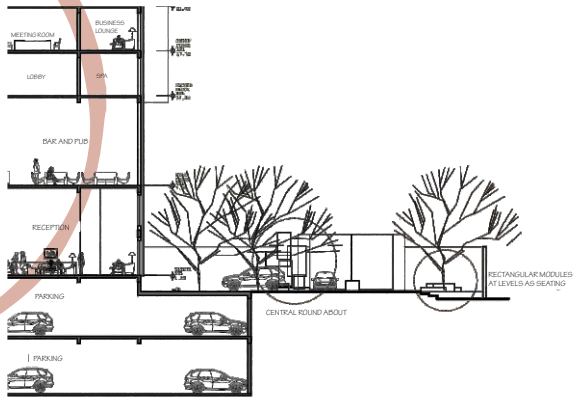
- Vrushali Kadam



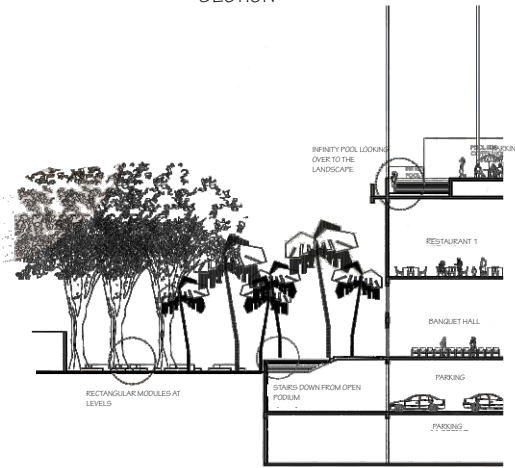
PLAN



SECTION



SECTION B-B'



SECTION A-A'



# DISCOVERING MUMBAI'S PUBLIC

As a child, my interactions with the public realm were mainly of denser spaces. Girgaon is South Mumbai's most dense locality where the majority of the population lived in 10X10 spaces. It also served as extended living spaces - passages in chawls, internal courts, one-meter interstitial space between the buildings used for crossing and by children for playing, narrow by-lanes used as a cricket pitch, occasionally used for Kabbadi or Kho-kho, Nakas or Nukkads as meeting places for friends, hawkers - the bhajiwalas -vegetable vendors lined up along the streets, Gai-walis outside temples; lanes seasonally transformed into festive space for Ganapati or Dahi-Handi celebrations, watching streets plays or cinemas projected on cloth screen; everything in the urban interstices was packed with public events. Just a few steps away was the expansive Japanese Garden and Chowpati, which provided a departure from my regular open public realm.

Much later while working on Uplifting the Mumbai's Public Open Spaces in Carmichael road, Kala Ghoda and Flora Fountain I realised and felt inspired by how happily Girgaonkars had reconciled to convert the available interstitial open spaces into vibrant public spaces.



# SPACES IN URBAN INTERSTICES

-Ar. Anuprita Surve

Intrinsically, Mumbaikars are not so fortunate to have the hierarchy of public open spaces that a Megacity would ideally desire. A citizen of Mumbai gets less than 2 square metres of open space against the international standard of 11 square metres per person. To top it all new planning norms also do not promise any additional public open spaces. Seemingly, only 6 percent of the total land in the city is made up of open public spaces of which 45 per cent is partially or completely encroached upon. (source UDRI)

Failing to implement the Charles Correa committee proposal to get one-third land as open spaces from Mill land development; the city has lost the last hope to get large parcels of open spaces. Architect P K Das says 'Our cities are controlled by real estate agenda and arbitrary changes in land use and development control regulations, which works against public good. As Mumbai is expanding our open spaces are shrinking under the pretext of real estate requirements'. Now the Eastern WaterFront development plan envisions significant open spaces to be given back to the City- however the fruition of this vision is yet to be seen on ground.

## Discovering urban interstices

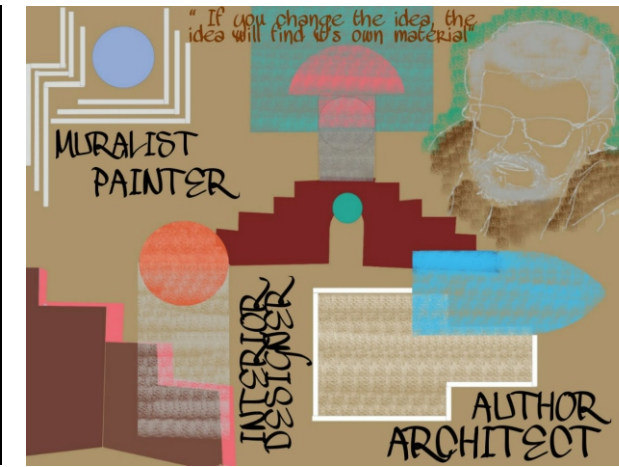
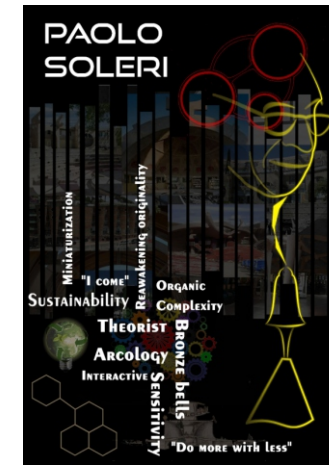
While various planning processes and schemes are struggling to reverse the process of depletion of the open spaces without much success, the city continues to grow and densify further strangulating Mumbai's open spaces. Hence there is a simultaneous need for the urban planners and designers to recognise the merits and significance of Urban interstices and their potential to serve as brilliant public spaces. A number of Town-planning studies and mapping exercises done by architectural students have always idealised and formalised the effective use of the interstices within the dense fabrics of the City.



In my study of Mumbai, I have discovered the need for breathing and halting spaces on the busy streets. The Urban Design project of 'Uplifting the public open spaces of Kala Goda Art Precinct' and Carmichael Road, we dealt with a situation where there was no extra space to congregate, to halt, or breath while traversing. This led to imagining the existing pavements, parking lots, spaces under the trees, streets and other the urban interstices and residual spaces, as spaces to be potentially transformed into warm public spaces by physically uplifting clutters walkways and by introducing street furniture like seating under the shaded trees and integrating perching and resting space within the bus shelter etc. The previously tarred parking lot was paved to turn into a weekend plaza. A two metres wide pavement was added to the parking lot proving a safe pedestrian link along the busy M G Road. Further the temporary structure of the municipal chowky metamorphosed into an Amphitheatre- the stepped seating, as the new design provided a dual function of chowky internally and a public gathering space externally. Over past decades, City's morphology is rapidly altering due to the high-rises, mushrooming of gated communities, large commercial establishments and sprawling robust infrastructure of metro, flyovers etc., adversely impacting people's connect to the city, making urban living less inclusive and detached from the vibrant collision with the interstitial spaces. The connect with the ground is completely axed due to elevated podiums as the living begins over the multilevel parking lots, even for EWS or SAR schemes...the narrative of Girgaon's by-lanes is diminishing.....today, even in Girgaon the towers have

sprung up along with their gated communities in several places and a new metro station (with metro-line piercing through the delicate fabric of Girgaon) has made its mark at the Thakurdwar junction ruining nuances of the interstitial spaces. This poses serious questions whether the old interstitial fabric will be replaced by a new one or the culture of using urban interstices will be completely erased from the city's landscape and whether it is possible to carry out sustainable living without due consideration to our intrinsic needs of congregating and being one with the City's social fabric. In the absence of interstitial spaces that served us as conduits of networking and spaces for coming together, what urban planners & designers need to explore, investigate and experiment while shaping the future cities and urban spaces? All these questions will chase we urban planners and designers in time to come.

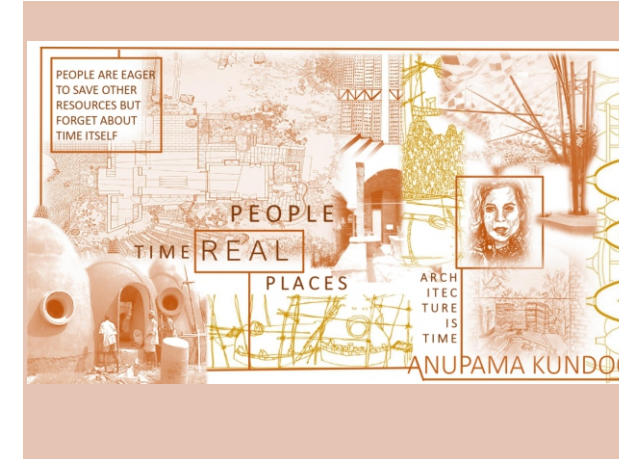
Ref:  
<https://thecityfix.com/blog/mumbai-on-two-feet-open-public-spaces-for-a-healthier-city/>  
 'Revisiting public spaces and democratizing them' P K Das



The lockdown has been hard to cope up in all aspects. During such situations, interesting activities which introduced students to various architects and their

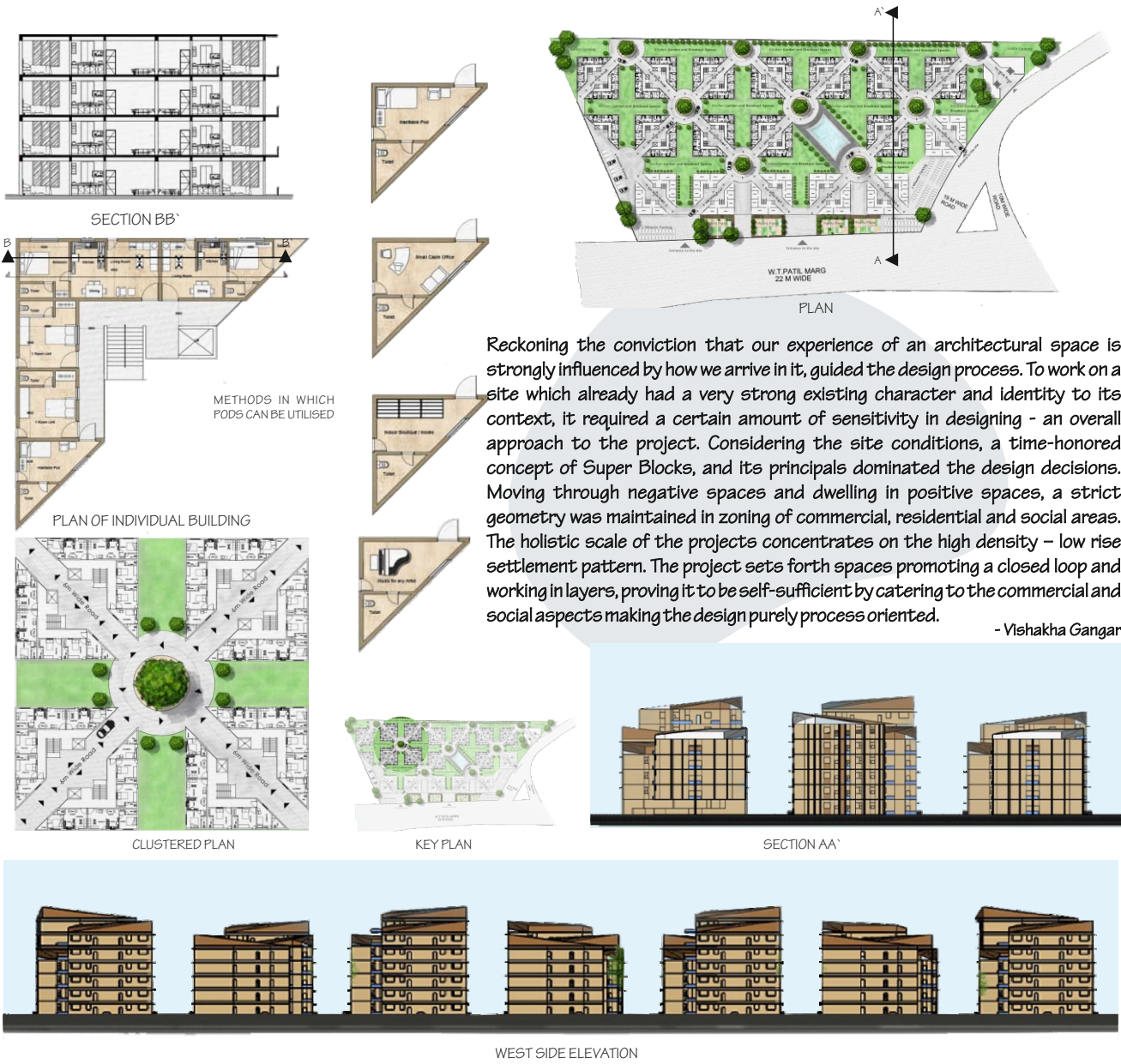
## COLLEGE PROJECTS

style of designing. It included composing a poster which speaks about design strategies of that architect in nutshell.

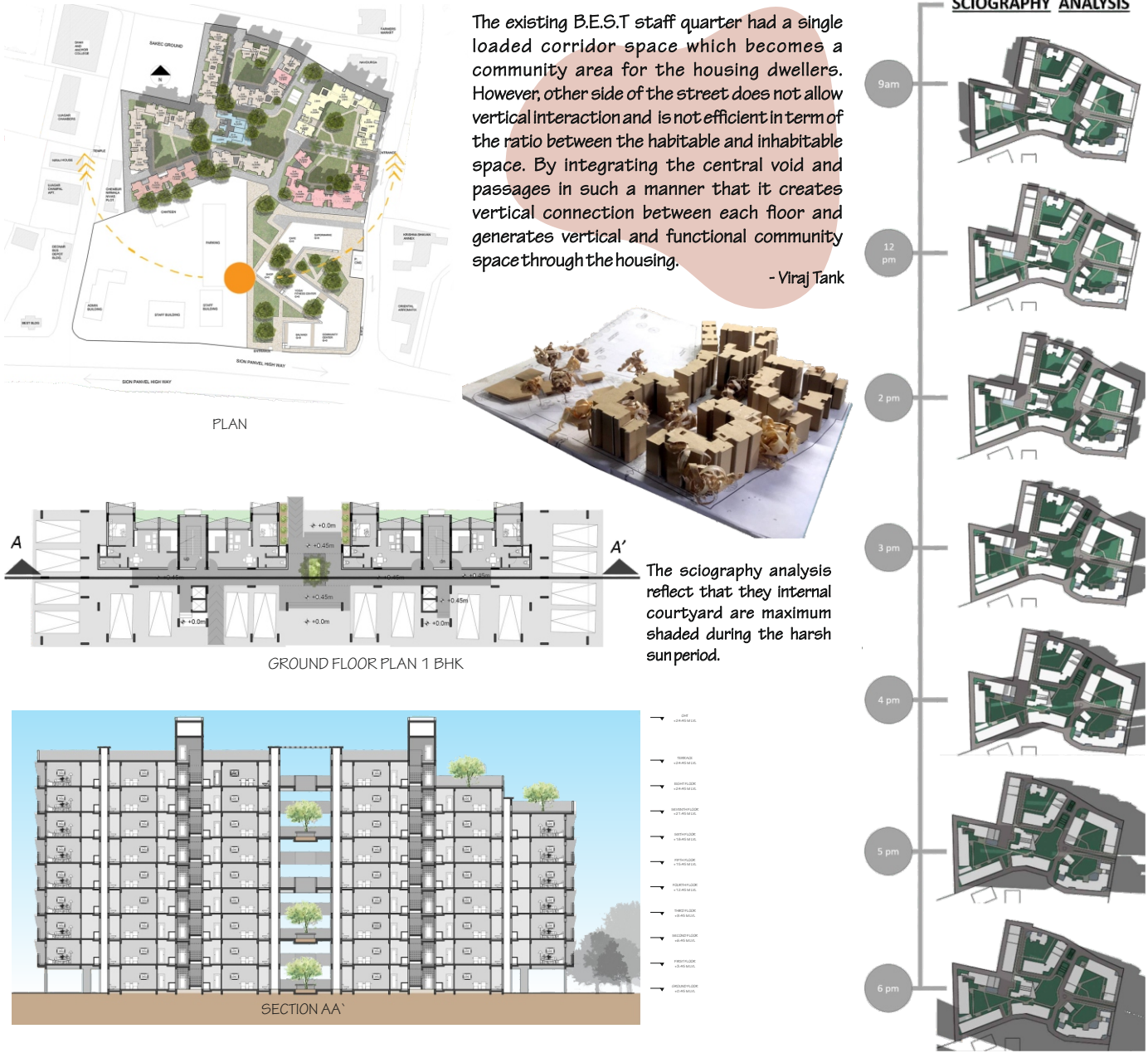




ARCHITECTURAL DESIGN SEM VII (2019-20) B.E.S.T. STAFF QUARTER



ARCHITECTURAL DESIGN SEM VII (2019-20) B.E.S.T. STAFF QUARTER





## INTERSTITIAL PARADOX

- Ar. Pawan Rao

Within all encompassing definitions of what 'space' is and thereby what 'in-between space' must be, there lurks a strange intuitively understood idea of the 'Gap Space' as a conceptual construct. Here, the idea of the 'gap' or 'in-between space' is not just that of the architectural kind or even the physical kind for that matter, but it also represents a metaphysical or psychological state...one that defines itself as the 'uncertainty' and uncomfortably locates itself between established structures of certainties.

It is often, and rightly so, identified as a space of random, energetic chaos brimming with possibilities and potential owing to the ambiguous overlap of so much which is hard to miss, yet impossible to articulate. It's ambiguity can be characterized the same way inner conflicts are experienced while making hard choices. It is that omnipresence which is never seen. Everyone knows and yet no one can put a finger on it. It is at times the gap between generations...an ambitious line that separates different 'circumstantially influenced' ways of thinking. At times, it manifests as the space where ideas are fought over relentlessly to further build the structures humanity has been building where the 'trial and error nature' of the space is an unspoken and unwritten moral code. And at times, it is either a space where most of history hides itself, or a space we occupy in the here and now, imagining all of our combined parallel competing futures.

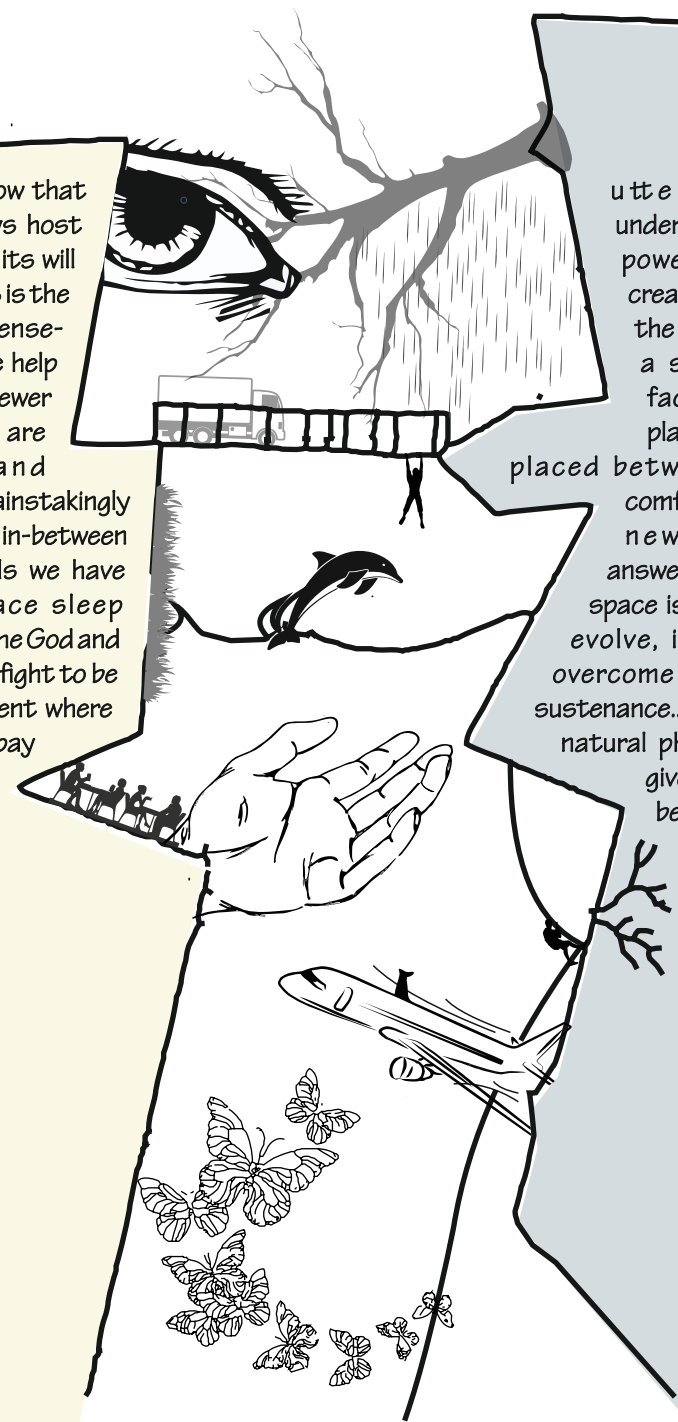
It is the place/space where fundamental truths rub shoulders with perceptual realities. It is simultaneously an echo chamber of ideology and a battlefield for settling fundamental differences through violence and peace.

Here, common human experiences of compassion, empathy and sensitivity come face to face with unfairness, injustices and longstanding unresolved resentments. It is a gap where opposing forces not just fight for survival, but also evolve into structures that reflect those battles. The nature of this so-called sandwiched perceptual gap is defined by what surrounds it and how it came to be.

It is a space every human will occupy at least once in their lifetime, however briefly it might be. Some will be exhilarated by the experiences it offers, while some will be threatened by its very existence. Some will stroll through the heart of this space, fascinated and pointing a camera toward it, intending to capture its essence without getting too close, while others will form protective bubbles around themselves to not let the harshness of the place get to them. Many born and forged in it, will try to escape its merciless grip, while some will seek refuge within it so as to break free from the mundane everyday-ness of the landscape around it. While many will find the cold reality of this space destabilising, some will be seduced by its organic mechanics and mold their identities based off of it.

One might've guessed by now that this in-between space plays host to those who surrender to its will and what it represents. This is the space which offers the sense-making apparatus, with the help of which change is forged, newer paradigms of certainties are created and failed and outdated certainties are painstakingly torn down. It is here, in the in-between condition, where potentials we have and the dangers we face sleep together. The space where the God and the Devil put up the eternal fight to be in the details. It is that event where "take the good and don't pay attention to the bad" and "one must find the right balance" are naively

uttered by those who underestimate the awesome power of what this space creates and misunderstand the spirit it carries with it. It is a sanctuary for doubt facing every certainty, a place of great discomfort placed between well structured comforts, a place of old and new questions among answers so far produced. This space is the fluid form that will evolve, improvise, adapt and overcome anything for its own sustenance....very much like any other natural phenomena.... in order to give birth to the next 'in-between space'.





# DESIGN DISSERTATION SEM X

-Arney Dalvi

## FUSION OF ART AND TECHNOLOGY

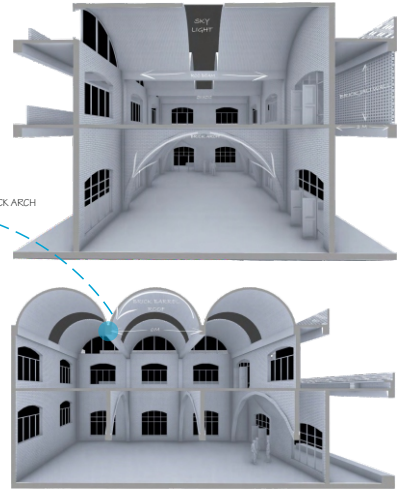
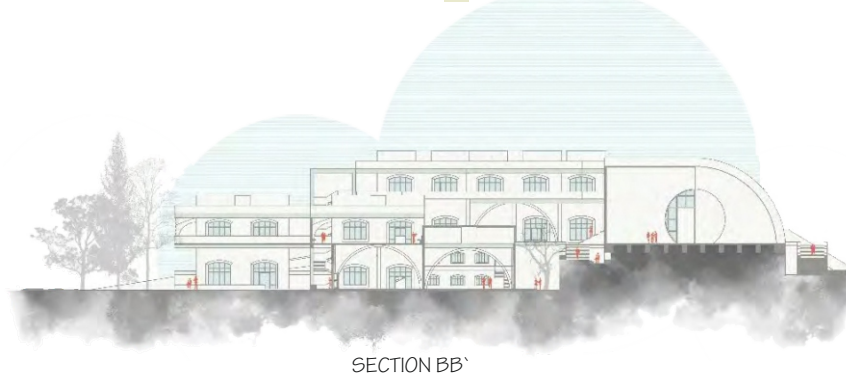
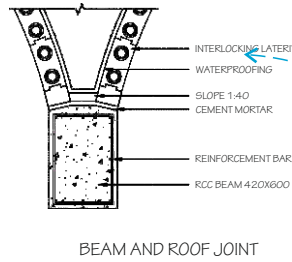
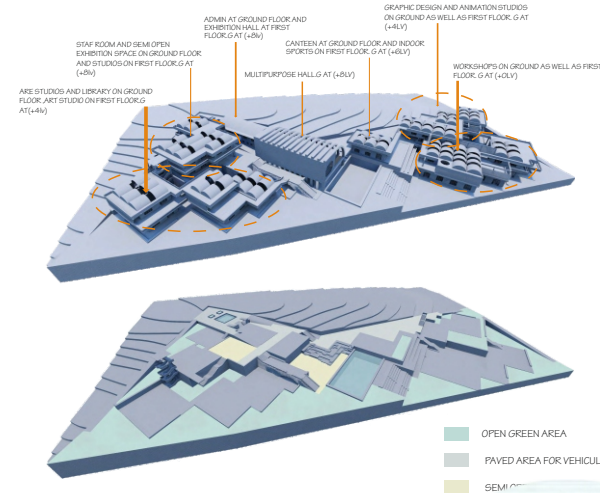
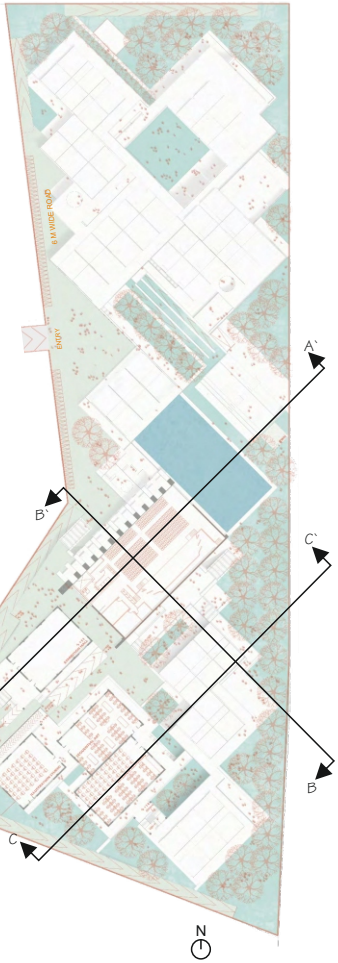
Art, which in itself is a vast subject can be stated as 'the expression or application of ones creative skill and imagination'. Technology on the other hand, 'is the branch of knowledge attributed to applied sciences, machines and virtuality'. Over time, these two have evolved together and are linked together. The positive aspect of this topic is that art has been greatly influenced by the rapid development in digital technology. These innovations have expanded horizons of creativity and opened new artistic frontiers. They have also allowed the artists to reduce time spent in the actual execution of artwork to a minimum, thereby freeing them to focus more on contemplation, creativity and developing ground-breaking ideas, as well as sound preparation for artwork. Thus, art, due to the involvement of technology is now only expanding at a whole new level in an interesting way.

Originally, art was a pure expression of an artist's own skills and individuality. Art works were produced using only the physical materials that were available naturally. Over the time, artists used materials like paints, canvas, brushes, etc. for painting and stone, wood, etc. for sculpting.

However, lately, few artists have started transitioning into digital artists and 3D artists, using materials like imaging software, electronics, machines, etc. to create works of art. Many artists who have greatly incorporated technology in arts are mentioned here. Jeremy Lutes creates large immersive work scale sculptures using fibre optics, neon and electronics. Michael Manning starts with a computer program that acts out the experience of dabbling in oil paint. Jonathan Foote makes artworks with the help of lasers and optical illusions usually in the form of illuminated forms.

The research study aims at analysing the changes and impacts of technology in art and to link them. Scope of this topic broadly ranges from the part that technology has played in various sub-branches of visual arts, fine arts and applied arts.

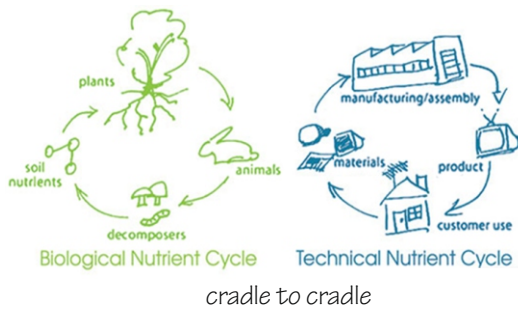
Artists, today, are facing increasingly more complex challenges to present distinctive artwork in the face of the many recent technological advances that have diversified the art world. Clearly, artists today find it more challenging than ever to present original and innovative ideas, and they need to exert themselves and stretch their imagination to succeed. Thus, there is a definite need to enhance the working style of such artists to empower them to cope up with the on-going system of working. Hence it becomes the prime objective of the project is to educate these artists to learn the respective techniques and make them adaptive to the current scenario.



VIEWS

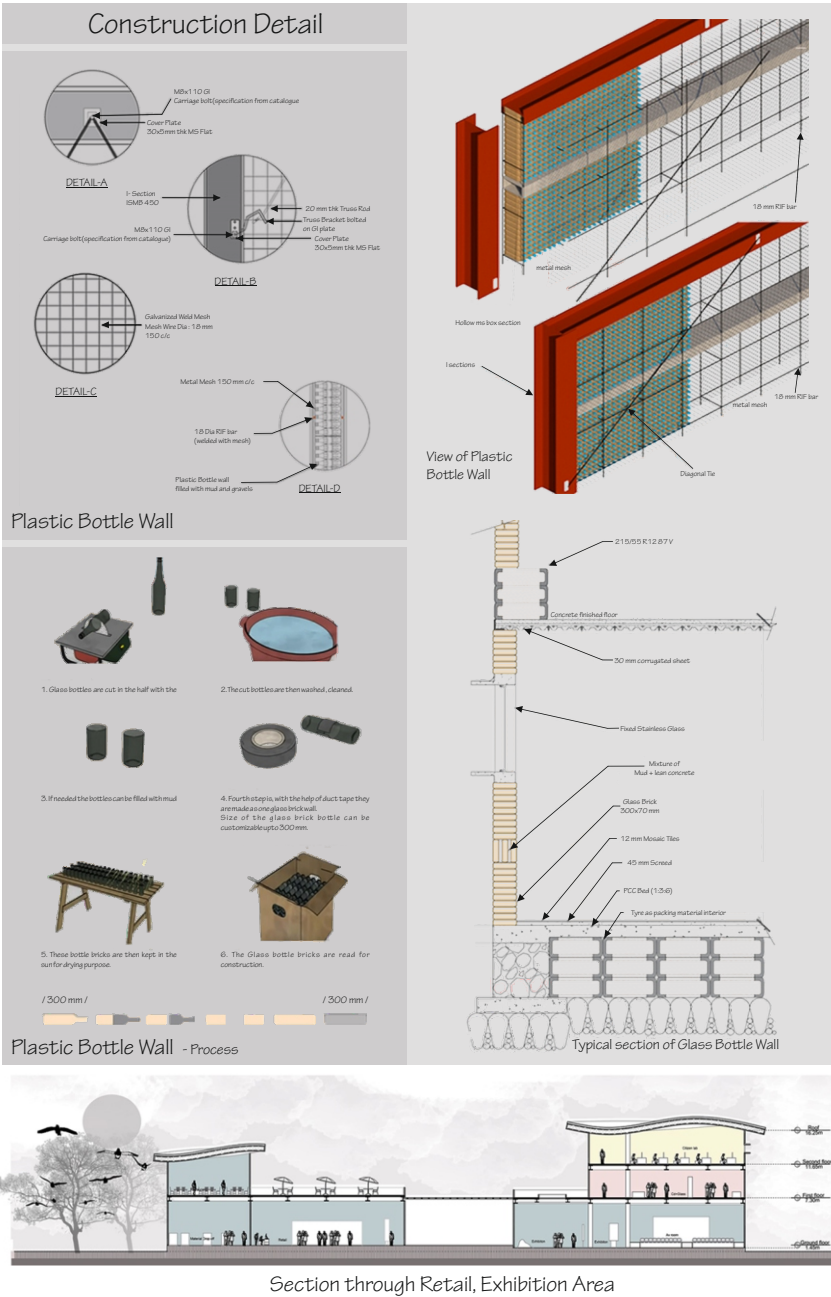
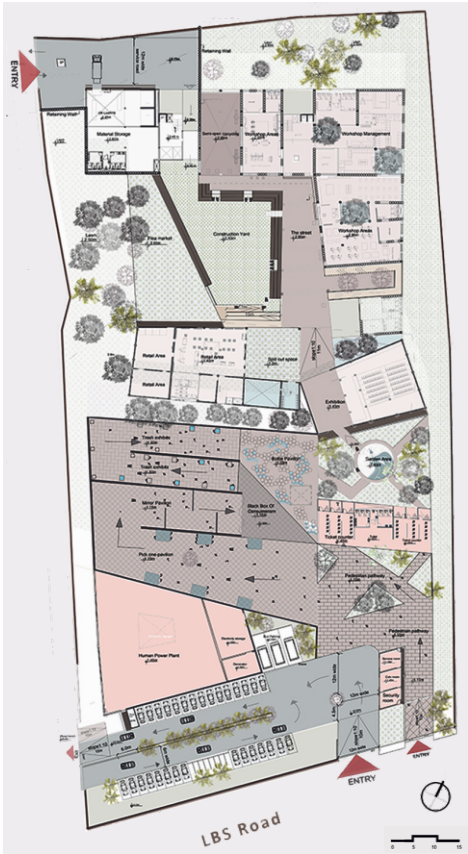
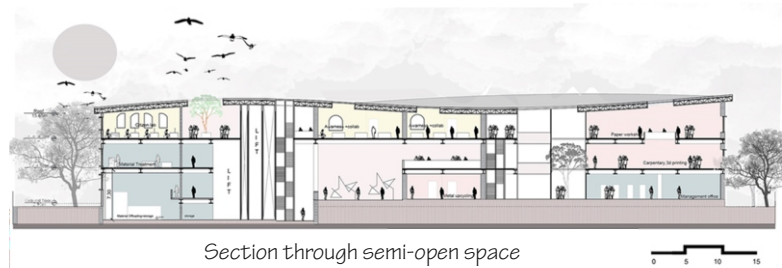


Re-consuming the idea of waste - a solution to Upcycling



Upcycling is transforming by-products, waste materials, useless, or unwanted products into new materials or products perceived to be of greater value.

India is amongst top ten MSW generators. As per a survey conducted by Ministry of Urban development, Government of India, it has been documented that Indian cities and towns are highly inefficient and out dated. Public Awareness and participation is next to zero. The thesis tries to give solution by creating UPCYCLING FACILITY, which focuses on adaptive Reuse of any discarded material to it's fullest, by creating Awareness and providing a public infrastructure.



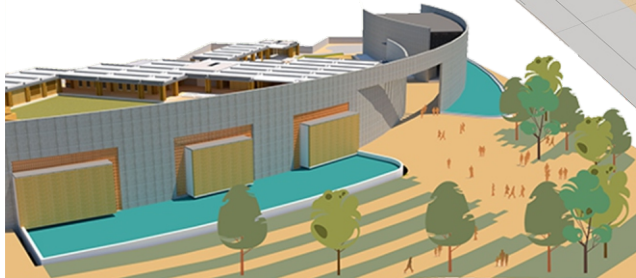
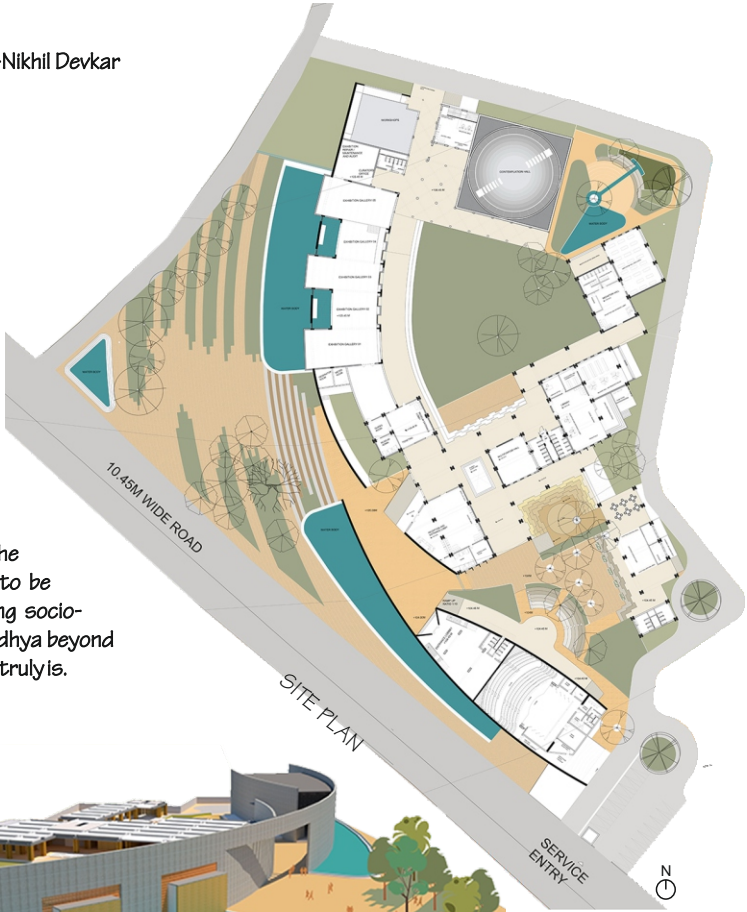


-Nikhil Devkar

# Land of Delineation

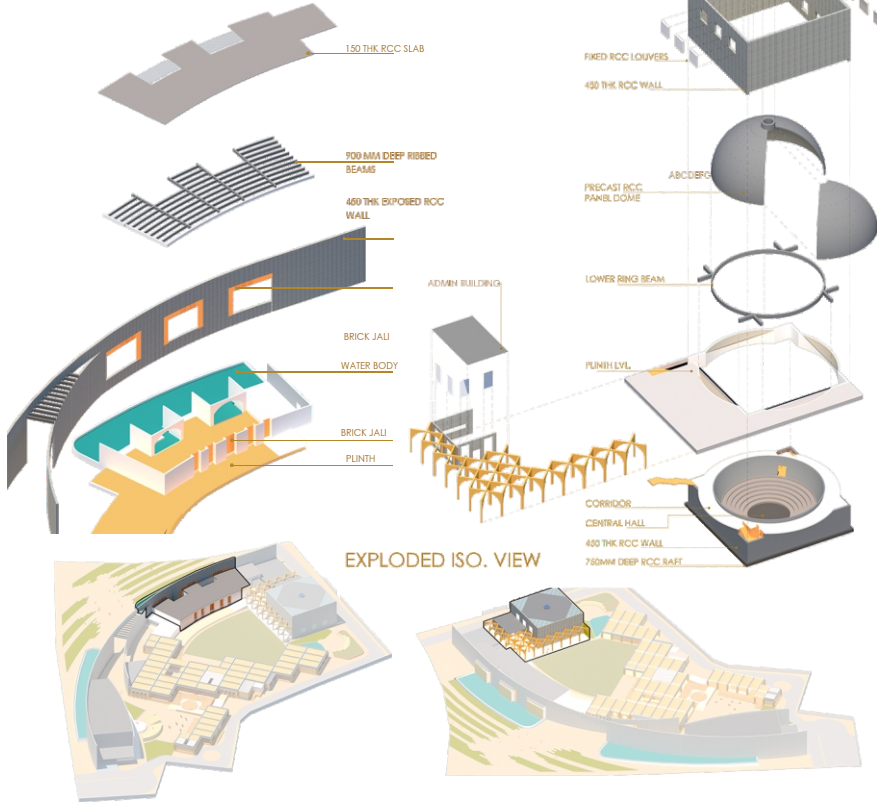
In Search of Ayodhya's Oneness

Land of Delineation is a design intervention that explores the role of architecture in the revitalization of a city's identity. Delineation means, "The action of describing something or portraying something precisely". Land of Delineation, therefore, aims to portray the oneness of the city that has perished, through a built form. The architectural intervention uses the arrangement of programme each of which responds to the fading character of Ayodhya. These spaces are foreseen to be neutral in nature and encourage public interactions blurring socio-cultural boundaries. The thesis is an attempt to look at Ayodhya beyond the dispute, to go back to its roots, and to see what Ayodhya truly is.



SITE SECTION

The exposed concrete wall is inspired by Renzo Piano's quote, "To build, is a gesture of peace." The proposal of the wall comes as a counter idea to the infamous demolition of the structure in Ayodhya that injected its social contour with fear, hatred, and communal frenzy. The wall which is built opposes the idea of what was initiated by the demolition.



EXPLODED ISO. VIEW



SITE SECTION



CONTEMPLATION HALL



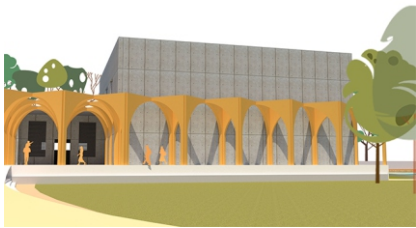
AMPHITHEATRE



ENTRANCE PLAZA



CONTEMPLATION HALL



CONTEMPLATION HALL



MASTERS

2020-2021 BATCH ONLINE ORIENTATION AND INDUCTION



MR. TEJAS SURA  
(M.S.,University of Texas at Austin)  
Director CTPL&PMI.  
Over 25 years of experience in the construction infrastructure industry in India and USA.  
Project & Program Management and Portfolio & Change Management expert.



GUEST LECTURES-AY 2020-2021



MR. UDAY YEDUR  
Head-Academic  
Relations, Project  
Management  
Institute



MR. ROHIT  
MANUDHANE  
Technology Leader,  
Arup - India



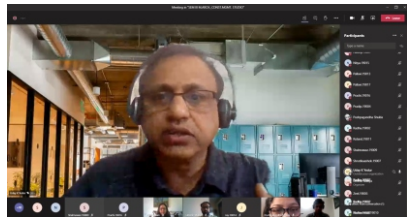
DR. SANDEEP  
LANGAR  
Asst. Professor,  
University of Texas  
at San Antonio

Special session was scheduled to highlight the importance and scope of project management in India. The session also provided information on PMI(Project Management Institute) and addressed its benefits.

As a part of special lecture series, research work was presented where Mr. Rohit Manudhane spoke on Circadian Lighting and Circular Economy and impetus given to Research at ARUP. Prof. Swali Chokshi, a multidisciplinary professional and an academican presented her research in Architecture and allied domains.

Special lecture series conducted on research covering the need importance and types of research.

Focussed discussions with students were conducted to analyse the systems adopted and processes followed for their individual research dissertation topics.



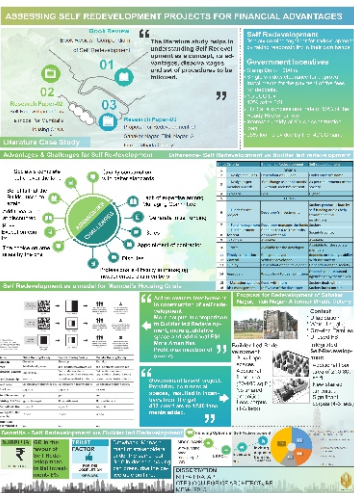
STUDENT COURSES AND CERTIFICATIONS

Students attended various certification courses online to increase their knowledge base.

These courses were linked to their research and proved to be a positive influence.



DISSERTATIONS AND RESEARCH



Research on the various construction techniques and materials were conducted exploring the domains of sustainable construction practises and construction management techniques.

Dissertation proposals were crafted under guidance of research experts with the objective of adding to the body of knowledge.

Our Final Year Master's Students Shrutika Keluskar and Pallavi Pathak submitted full length papers for National Students Conference 2021 by DYPSOA, Pune.

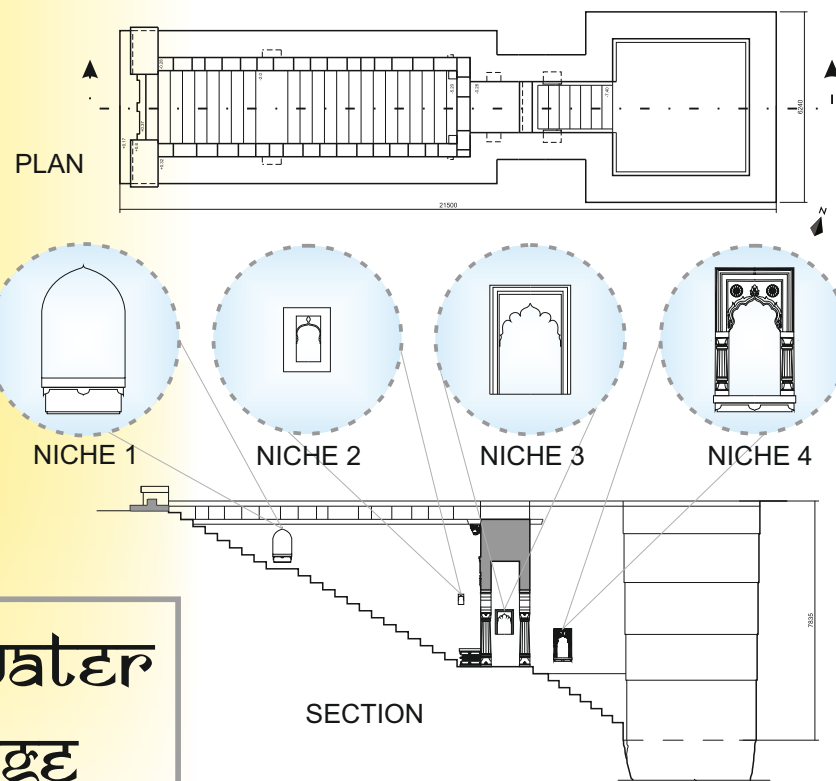


Their papers were selected for presentation and publication. Shrutika Keluskar was given the award for "Best paper of conference" for her paper-"Ubiquitous City Services for Biomedical Waste Management Systems in Thane district".

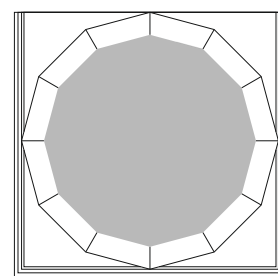
PAPER PUBLICATIONS AND ACHIEVEMENTS



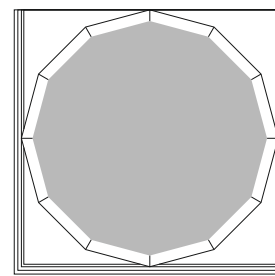
Water is an undeniable source of living. It has reached us through different mediums throughout history. It is important to see how we have evolved as humans in these little attempts to make such sources available to us. Water heritage is one such aspect where evolution of the human era can be seen through the advancements in the thought process of making water available. Following is documentation of one such water heritage, a barav (Step well or Barav, which is an unique water source edifice built underground. It is a structure that was long all through India for all intents and purposes in many districts of the Indian subcontinent . For centuries, stepwells which consolidated a chamber well that reached out down to the water table - providing water for drinking, washing and harvest). The site is located in the Palaspa village in Parvel, Raigad.



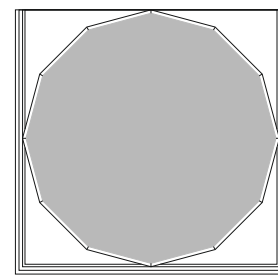
intache water  
heritage



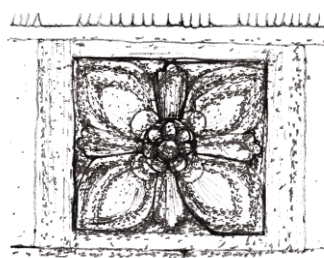
SECTION AA'



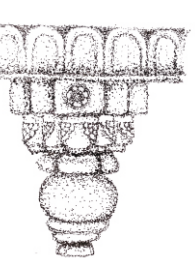
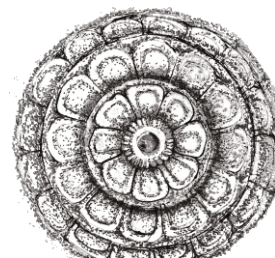
SECTION BB'



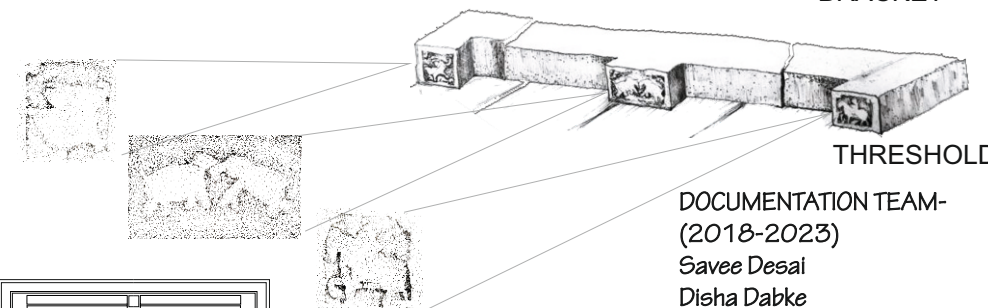
SECTION CC'



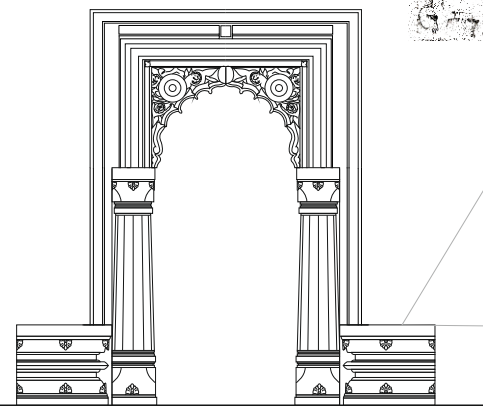
FLOWER MOTIFS



BRACKET



THRESHOLD

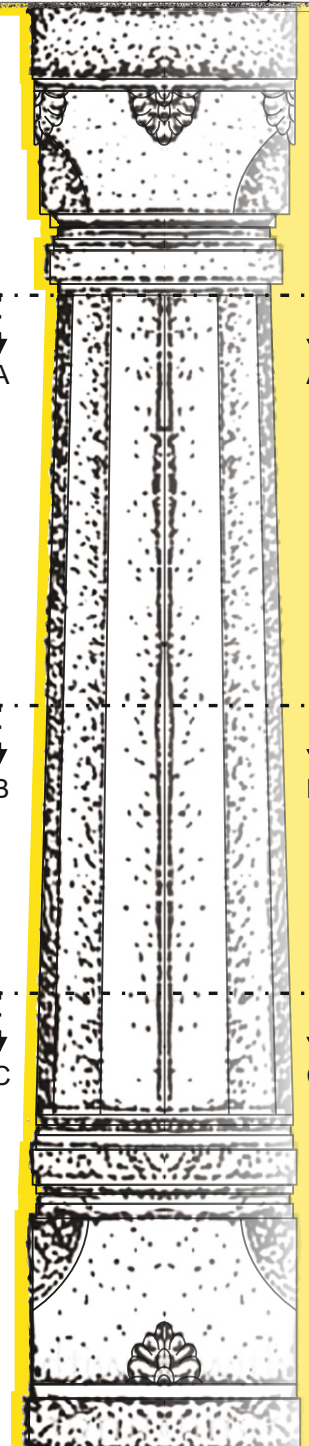


ARCHWAY ELEVATION



PEDESTAL

DOCUMENTATION TEAM-  
(2018-2023)  
Savee Desai  
Disha Dabke  
Akanksha Warange  
Aditi Kolgaonkar  
Soham Kashikar  
Priyanka Kingre  
Parshwa Mistry  
Somshankar Katgaonkar  
Jayesh Patil  
Pawanshankar Gidla  
Yash Sawant  
Amey Gawade  
Durgesh Choudhary



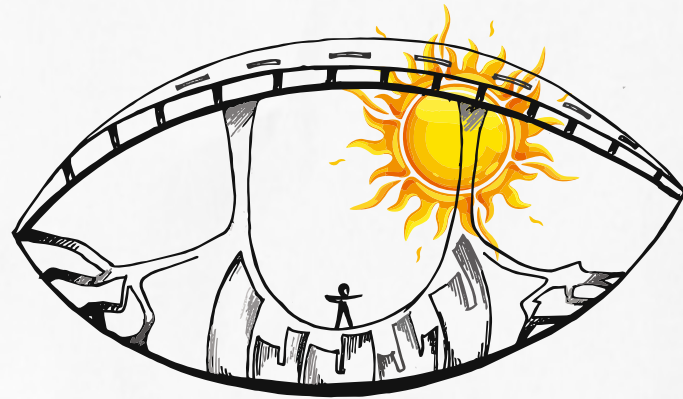


## SPACE IN-BETWEEN

-Shubhangi Kumar  
Second Year B.Arch.

Traditionally interstices were often associated with junk spaces, failure of urban development, as a lack of a healthy public space or rather a prototype of an “anti- public space”. From a modernist view point interstice means emptiness but emptiness also means possibility. In today's world, where there is dire need of space, most of the land has already been built on and the seas are being reclaimed, we turn our heads towards these interstices to multifunction. Architecture defines space by distinguishing one space from another and distinction between inside and outside is ultimately mandated by this act.

Planning had this propensity at the beginning of time to enhance inside shelter and housing and to offer outside movement and use of the natural environment; but without each other, there is no insider and outside. Elements such as openings and visual accesses supported this important relationship and had been strengthened by the time. Excellent designing sees this threshold as a third category of space that by turning it from a tension line to a “in-between space” has the potential to increase the entire quality of living spaces. In direct experience, the words inside and outside represent a dichotomy.



A relation, shift, boundary, differentiation, threshold or tension line may be known as an in-between. It is not possible to look inside and outside at the same time.

Interstices exist in every city and how do we recognise them? Interstices are small spaces, the outcome of a composition of interaction and affecting multiplicity of actors that coexist within a spatial situation. Alleys, passages encircled by dense structures, offer a more institutionalized, economically and legally strong feeling. As the city colonizes territory through acts of special repartition these interstices create distributions and trajectories.

A group of designers came up with the concept of converting the space into modules of commercial offices and performing spaces while playing with the leftover spaces under the flyover in Bangladesh. Leasing these spaces to enterprises, making it a commercial hotspot to raise maintenance funds and convenient accessibility. Everything is to be achieved in the interstice, all must be experimented. For designers of various disciplines of the modern world, the challenge is to find out how to re-habit, and co-exist in the interstice, not to build more but build within it.

## NASA 2020-21



NASA is a student oriented national association, having a motto of providing a common platform for students to interact and share their knowledge. Our students actively participate in competitions, seminars and workshops held by NASA. For students, every year or for the first time, it's a wonderful opportunity. Many students and experts exchange knowledge and experience. We are improving our skills throughout the years.

In, ANDC, 2020 two of our teams were qualified on the list on top 100 entries. And one of the team was selected and awarded as juror's choice 2020.



Rushabh Sanghvi  
(Unit Secretary)  
Third Year B.Arch.



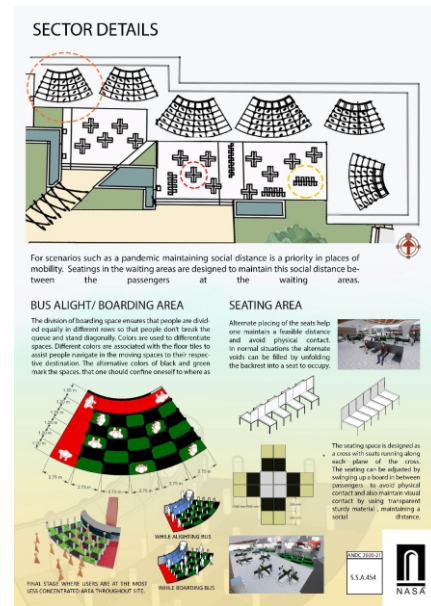
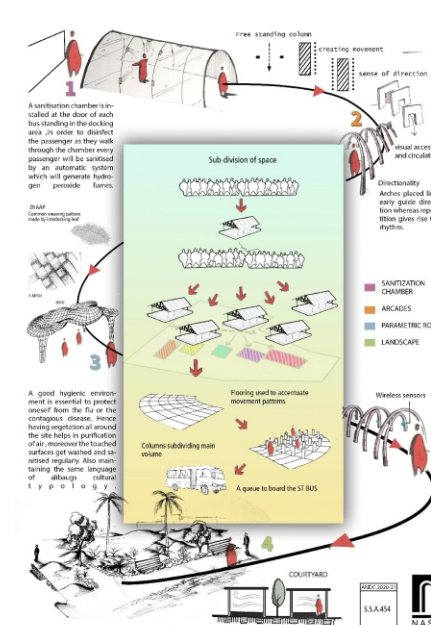
## ANDC TROPHY 2020-21



With minimal design interference, the design follows the concept of having significant effects. By establishing designated paths and preventing any accidents, the current movement of the bus stop was enhanced. Sanitization gates, mask disposal machines and sanitisers are provided to ensure passenger safety.

THE TEAM-  
Pranay Mulik  
Krishn Yadav  
Ashish chivelkar  
Sunil Prajapati  
Sanskar Jadhav  
Nidhi Nanoskar  
Rahul Jadhav  
Aditya Ghodkelsha  
Isha Rajive  
Nupur Naik  
Jaigutta Rajadhyaksha  
Darshan Waqhmare

## ANDC TROPHY 2020-21



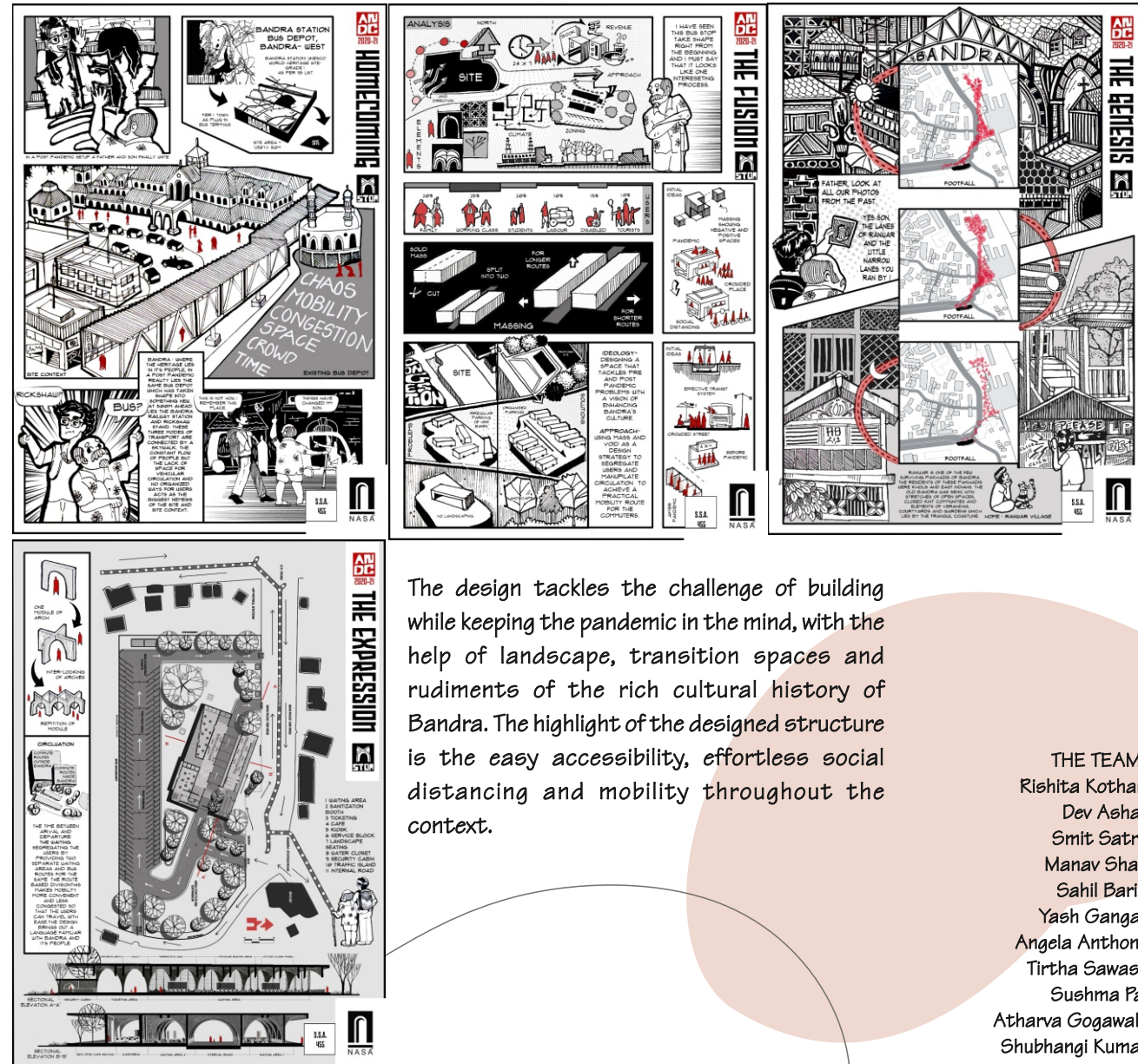
To avoid crowding, the design follows the approach of dividing passengers at the entry point. The structure is spread around the busy site of the Alibaug bus terminal to fit different roles and to manipulate the crowd for the least physical interaction. The divider seatings are placed in a diagonal manner which allows the passengers to move comfortably while not compromising on acceptable distance between other passengers.

THE TEAM-  
Mihir Walawalakar  
Divya gupta  
Akanksha Achari  
Chhavi Rautela  
Shivani Chande  
Pranali kadam  
Anchal kushwaha  
Ritika Warang  
Aakanksha Warange  
Aditi Nikam

Fahad Kagdi  
Yashashree Parab  
Ekta Arolkar  
Pushkar Kulkarni  
Harshita Mayekar  
Ekta Sanas  
Saloni varta  
Pawanshankar Gidla  
Himanshu Gupta,  
Anoushka Janah

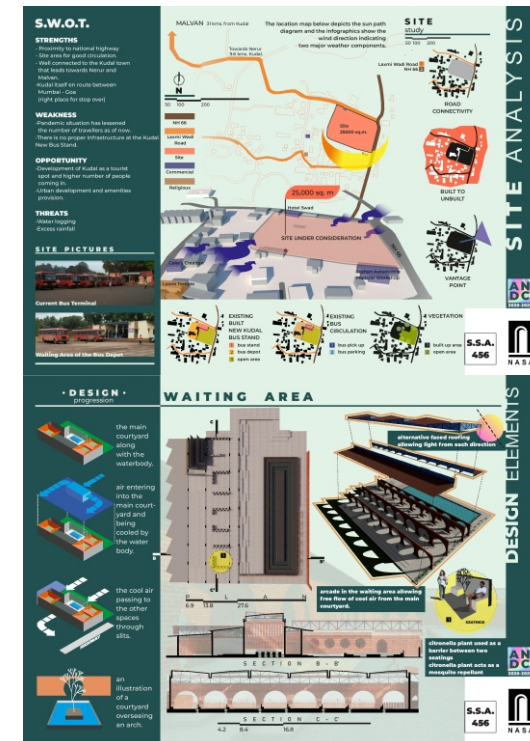


## ANDC TROPHY 2020-21



The design tackles the challenge of building while keeping the pandemic in the mind, with the help of landscape, transition spaces and rudiments of the rich cultural history of Bandra. The highlight of the designed structure is the easy accessibility, effortless social distancing and mobility throughout the context.

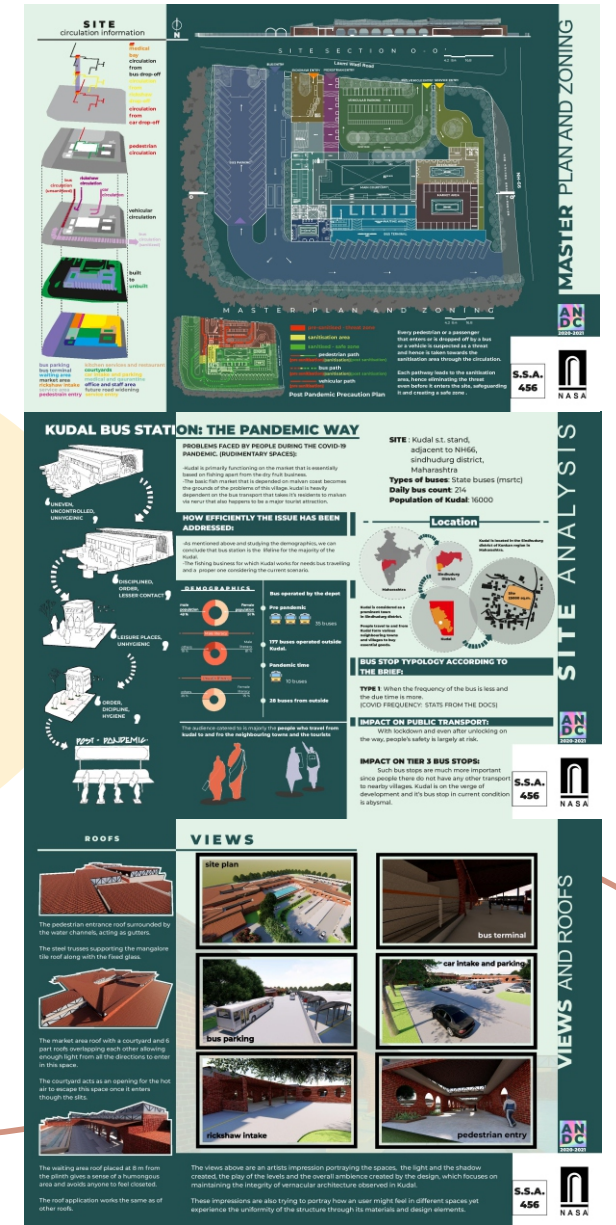
## ANDC TROPHY 2020-21



The design merges the traditional architecture with contemporary architecture and at the same time be functional. The humid temperatures of Goa are naturally cooled down by providing courtyards and water bodies. The local economy is boosted by including marketplaces and eateries within the premises.

**THE TEAM**

Navin Borkar  
Milit Satra  
Yrushank Warang  
Utkarsh Jagtap  
Dhir Patel  
Anjali Lodh  
Saurabh Gadaashi  
Parshwa Mistri





# [INTER]STICE STELLAR

-Fahad Kagdi,  
Second Year B.Arch

Murphy's law states "Whatever can go wrong, will go wrong". The movie, The Interstellar plays with the idea of space exploration, time, and gravity. Earth and the human race are on the verge of extinction, N.A.S.A.'s last hope looks to Cooper, Amelia Brand, Romilly-the astronauts for space exploration and TARS, a robot under the direction of Professor Brand to search for answers in the deepest corners of space while dealing with Murphy's Law. Cooper leaves behind his family in search of new horizons.

In one of the plot scenes, the spacecraft is left with insufficient fuel to reach Edmunds' planet due to damage in the spacecraft they use a slingshot manoeuver so close to Gargantua (the black hole) that time dilation adds another 51 years. In the process, Cooper and TARS chuck out themselves to shed weight and propel the spacecraft using 'Newton's third law' to ensure the spacecraft reaches Edmunds' planet with Amelia Brand in it. Slipping through the event horizon of Gargantua, he expects to eventually get crushed by Gargantua's gravity, yet is miraculously spared once his shuttle is ripped apart. They find themselves inside an infinite, inter-dimensional space that allows him to look back into different moments in his daughter's childhood bedroom, including the day he left for his mission on the spacecraft. Cooper continues to record what he is seeing and transmits it back to TARS, hoping the additional data might help the scientists back on Earth.

TARS determines that they made it through

Gargantua alive because they were protected by "them," the mysterious beings who constructed the wormhole that allowed the spacecraft to travel to this new galaxy in the first place. Since the beginning of the film, who "they" are has been a mystery. While NASA realized the wormhole (the one that shows up by Saturn, earlier in the movie) was artificially constructed by some sort of advanced intelligent beings, they didn't have any information about "them" beyond the assumption that they might be benevolent, since humanity's only chance at survival is due to the wormhole. TARS deduces that "they" also must have built this library to help Cooper understand their four-dimensional reality.

Our brain develops process thousands of thoughts in present which becomes a memory in future. We often forget certain thoughts in this process and it remains ignored and unnoticed. Currently, humans lack the ability to travel through time, process it as a dimension. Hence, we cannot see those moments as Cooper was able to in his tesseract. He cries when he sees his memory of leaving his daughter Murphy for the space exploration and makes several attempts to leave a message through morse code which appeared to be a "ghost" by Murphy in the start of the film when she sees it.

We do not know what impact these interstitial thoughts hold. How would we look upon the interstices in our thoughts- would we go in past and work on them so that it can create an alternate future or look in the future to see what their importance was?





## RAYS OF POSITIVITY

- Ar. Harshada Satam Punde

आता उजाडेल... आता उजाडेल....

खिन्न आंधळा अंधार आता ओसरेल पार

लहरीत किरणांची कलाबूत मोहरेल

आता उजाडेल .....

-----कवी पद्मश्री- श्री मंगेश पाडगावकर

In today's context, these lines are highly inspiring, as soon as it is morning, the darkness will disappear. We all are trying to find our 'interstice' which will bring in hope. We were all in the unpleasant shade of life after March 2020, filled with uncertainty. There was no scope for predictions, no remedies for this situation. The wave of this pandemic swept the entire world. It affected the physical, psychological, social, economic aspects of human life.

Worldwide due to the pandemic, many lives were lost. People are still struggling to find a vaccine and some are still fighting. Small scale jobs are closed down. It has been a difficult time for the economy. This situation resulted in migration in many parts of the country.

Was it a planned move by 'Nature'??

Though the pandemic has given us negative vibes there are somewhat hidden and equally positive aspects. Nature utilized the lockdown for rejuvenation – The air was less polluted. The rivers became naturally clean due to lesser pollution. A lot of traffic reduction in urban areas resulted in less noise pollution. After many years people in urban areas were able to hear the chirping of birds.

Lockdown was favorable for small potted plants in some balconies, which hardly receive any attention any other day. Some of us understood the importance of health. The increase in the number of morning walkers was significant post lockdown.

The most crucial age groups in the family – children and elderly- enjoyed quality time with their family, which was difficult for many due to hectic schedules. The cohesiveness of the family was strengthened with care, though there was social distancing. People spent time together playing games, nurturing hobbies. Household work was shared and happily completed as a family. The lockdown period also curbed unnecessary expenses. The need was a priority over greed, which was not the case pre-COVID. Thus, it seems like its time for introspection from a busy introvert schedule to a more inclusive approach.

The essential learning from all this can be – the human being is not the only species in nature. A small virus can teach a lesson to all humans; thus, nature should not be taken for granted. Nature is giving us a chance to improve & rethink bad practices, greedy actions. We should conserve and take care of all the natural resources. Nature is the best to generate, operate, and destroy itself. A human being should not intervene beyond certain lines.

Considering this COVID-19 pandemic as a break and turning point given to us, we need to focus on more positive aspects and move on. Further, we need to be more cautious, respectful towards other environmental species, and nature as a whole. Hopefully, these positive rays will open our eyes to a more pleasant future.

Do you ever stop at a moment and give a thought to the possibilities you had or might have at every stage of your life? Firstly, the journey starts by yourself. During this journey you capture beautiful memories. Some stay with you, some fade away gradually. To reach up, you start and climb. Sometimes your feet may love certain paths, sometimes not. If you have a goal, you trace every line that you feel will bring you to the top. But you can't always be on top. It's the journey through the void which gives the pleasure of being at the top and success. It's the void that opens up the possibilities in every concentric line of direction that you put your step on. Whether you enjoy the wind of success or taste the unknown paths that may not reach the top but will bring you to horizon; you choose your own way.

-Sanskar Jadhav  
Third Year B. Arch.



# LUCIDITY





AR. RAHUL CHEMBURKAR

### Jal Aakhyani

Architect Rahul Chemburkar is an exemplar in the field of heritage conservation and Awareness. He spoke at length about the historical Water Heritage sites and their importance in modern architecture. His documentation on these structures through his keen sketches and illustrations only added to his presentation.

Mumbai floods and finding solutions with citizen's participation

Subhajit Mukherjee has earned himself the name of 'Water Hero' or 'Jal Rakshak' through his distinguished dedication in social work for saving water and increasing the underground water table. His lecture revolved around the topic of cost efficiency and effective solutions for urban flooding. He brought light to the idea of influential cooperativeness towards progress that comes with citizen's participation.

MR. SUBHAJIT MUKHERJEE



MR. HARMEET CHAWLA

MR. MANOJ ANCHAN

### The Ikigai Project

'Ikigai', a Japanese concept that means 'a reason for being' was eloquently put together by Harmeet Chawla and Manoj Anchan. The duo embarked upon the ideology of a person's 'ikigai' which gives them a reason to find joy and happiness in the small, day-to-day activities rather than reaching some final goal that promises bliss.

## संवाद श्रृंखला 2.0

SEPTEMBER 2020

Samvad shrukhalas are a series of curated architectural narratives on various aspects and dimensions. Architects and professionals from each of field interact with the audience and contribute comprehensive information. Renowned architects and engineers like Ar. Rahul Chemburkar, Ar. Chetan Raikar, Ar. Anjali Jadhav, Er. Chetan Raikar gave interesting and informative presentations to the students.



AR. ANJALI JADHAV

### Conservative and Adaptive Reuse of Heritage structures

'Progressing while preserving the elegance of the past stands high in Architect Anjali Jadhav's convictions. In her narration of co-existence between ancient values and modernistic reality, she also touched upon the importance of taking into consideration the aesthetics and design flexibility while restructuring a building.

### Challenges in Heritage Conservation

Mr. Chetan Raikar, a structural engineer from profession and a true conservationist at heart, talked about understanding the traditional knowledge of building materials and techniques with the intent of merging them with modern tools and practices. Heritage conservation clues us in on the evolution of society and provides a sense of identity to a place.

ER. CHETAN RAIKAR



## संवाद श्रृंखला

JUNE 2020



## GUEST LECTURES



AR. SHEFALI  
BALWANI



AR. ROBERT  
VERRIJT

One of the most experienced duo whose design focuses on impact of climate on a structure. They are principal architects at Architecturebrio. The duo aims to create sustainability in their design which compliments the changes in the world and addresses the jump towards urban setting. They inspired the students to focus on landscapes and environmental aspects to enhance the user experience in a design.

Being director of Humane Architecture, professor Frank Lyons imbibes the leadership quality within the students pursuing this field. Along with practising architecture, he believes that each student must develop skills to lead a project efficiently.

AR. FRANK LYONS



AR. MARTINA SPIES

She is the founder of Anukruti team where they focus on building playgrounds in the slum zones. Looking at the fast development rate of residential and commercial towers, the physical growth of children have been kept at stake. She has motivated students to create little spaces labelled as urban flowers. With her works, her team builds an aspiration to create community centric spaces for children who are deprived from experience of playgrounds.



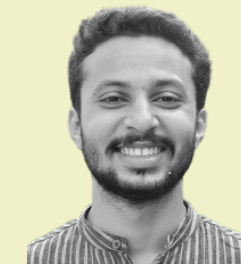
AR. CHRISTOPHER  
BENNINGER

Christopher Charles Benninger gave us a direction towards being thoughtful architects and going beyond the standard idea of commercial architecture in bringing the most appropriate contextual sustainable solutions to the built environment. He talked about taking a step outside of materiality in a space called architecture.

### Caste System

Mr. Durgesh Solanki, in his lecture, touched upon one of the most sensitive topics in modern India; caste system. He verbalized the concept of urban inequality through his study of caste and racial discriminations. The prevention of prejudice can only be done by envisioning the qualities that are similar rather than detailing those that are different.

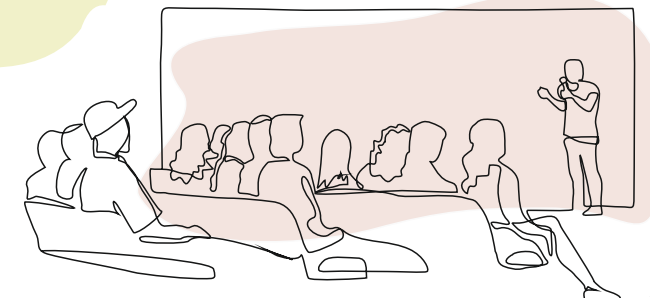
MR. DURGESH SOLANKI



AR. NAMRATA SHETTY

### Design of Sports Facilities

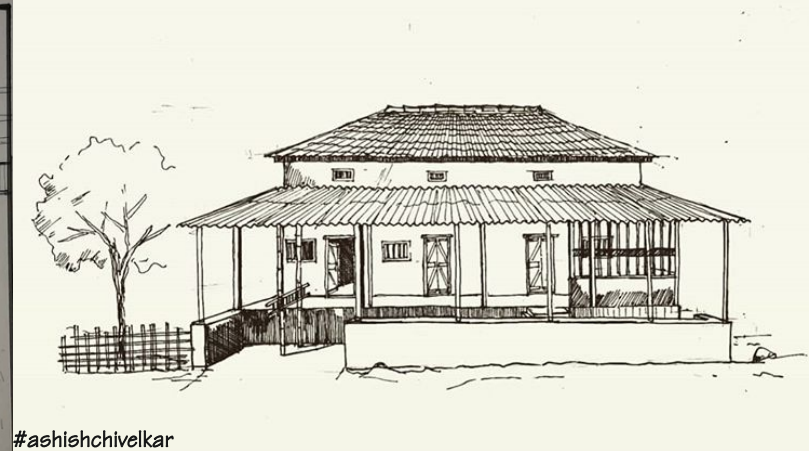
Architect Namrata Shetty dwelled on the aspects of creating a beautiful design while keeping the primary functions of a facility in mind. She directed the students towards taking the step that made a design unique and helped them in the process of shaping their vision.



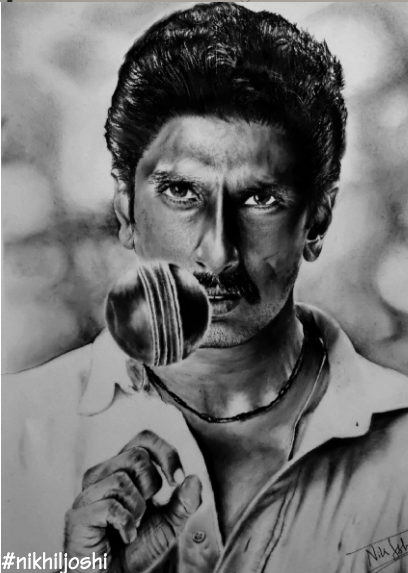




#ashishchivkar



#ashishchivkar



#nikhiljoshi



#nikhiljoshi



#nikhiljoshi



#nikhiljoshi



#nikhiljoshi



#jayeshpatil



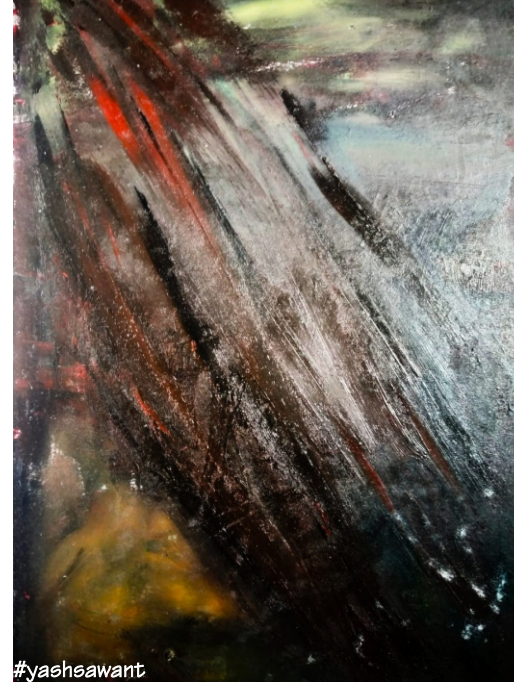
#jayeshpatil



#jayeshpatil



#yashsawant



#yashsawant



#yashsawant



#yashsawant



# Deutsch and

## GERMAN:

Learning a new language is the first step for exploring the world. Students have fun and learn about different cultures and societies.



## ADVANCED INTERIOR DESIGN:

In this elective, students focus more on the interior of the structure and experiment with colors, textures, themes, and materials.



## WATER COLOURS:

Representation is very vital aspect in architecture. Water colours is one of the most versatile mode to express ideas.

Each session students learn how to experiment with colours and brush techniques.

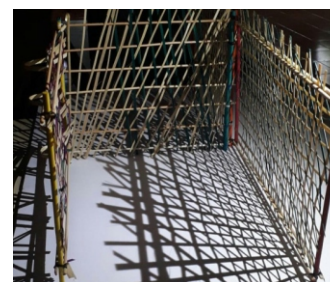
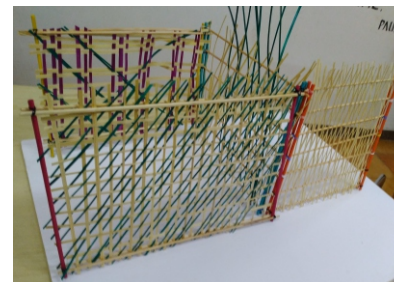


## METAL UPCYCLING:

By introducing metal and getting familiar to the technique of welding, cutting, grinding, etc. students create artistic works of recyclable metal.

## ELECTIVES

Electives as a subject enables the students to explore the extent and possibility of architecture and design as a discipline. Once a week, students are given a break from their regular academic subjects and are given the opportunity to try out new things through electives.

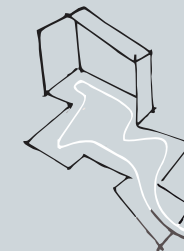


## BAMBOO:

Bamboo is one of the traditional construction materials spread across the continent, in this elective course, by creating physical models, students learn about the physical properties, resilience and flexibility of bamboo.

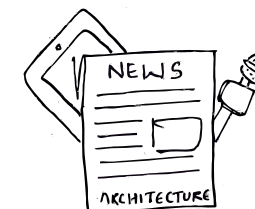
## CERAMICS:

Ceramics gives students a chance to experiment with a different material like clay and get to know it's properties of ductility. It also inspires students to mould their ideas and give it a volume.



## BARRIER-FREE ARCHITECTURE

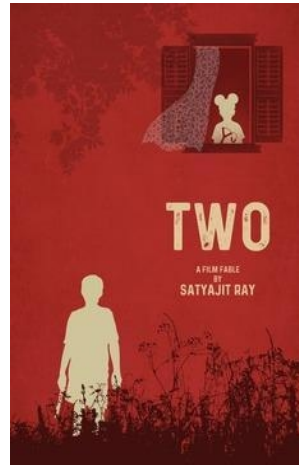
In this elective study, students learn more closely and discuss ways to design an obstacle-free society, with user sensitivity and experience.



## JOURNALISM:

Journalism allows one to appreciate, criticize, read, and write in various fields within the curriculum of architecture.





Two : A film fable, a 1964 black and white short film directed by the award winning filmmaker, Satyajit Ray is about the encounter between a child belonging to a wealthy family and street child, through the rich kid's window. The film is rendered without any dialogue and displays the attempts of competitiveness between kids in their display of the toys. Being a film of that age, it has marked how our culture unconsciously increases societal prejudices.

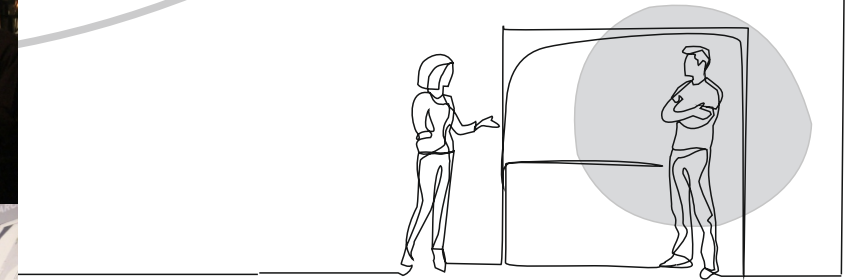
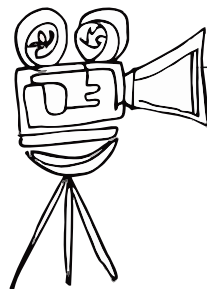
## MOVIE REVIEW

Alike , a 2015 animated 3D movie is a short film, directed by Rafael Mendez about the relationship between a father and son who live in the society where work ethic and order literally choke the color and creativity out of the inhabitants.

The students and participants of the club discussed how the colors are symbolically used and improves the film.

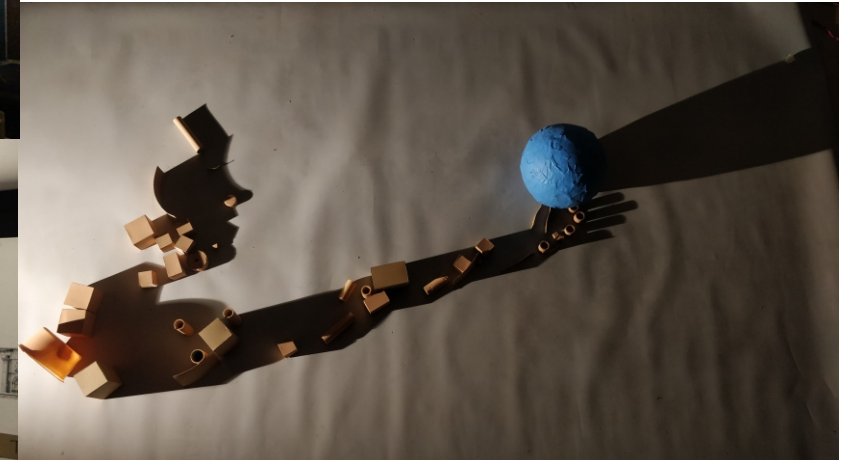


Spirited away which translates into "Sen and chihiro's spirited away" is a 2001 film written and directed by Hayao Miyazaki, he came out of retirement to make this film after meeting the daughter of a friend, on whom the main character is based Toshio Suzuki and animated by studio Ghibli. It shows and takes us to a dream land so beautifully animated that you feel alive in the film scenes.

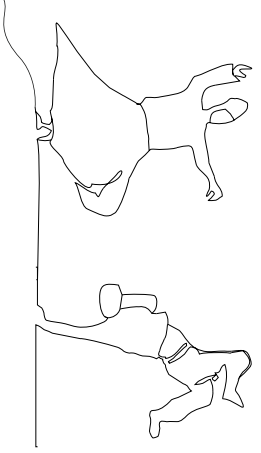


## EXHIBITION

CTES COA puts up exhibition every year to display works of students and also promote various skills like painting, sketching or other artwork that students excel in. Exhibition is set up taking in the theme of year. Along with students work, installations done by students are displayed over here. Showcasing different genre of creative designs gives opportunity for interactive discussion among the students.



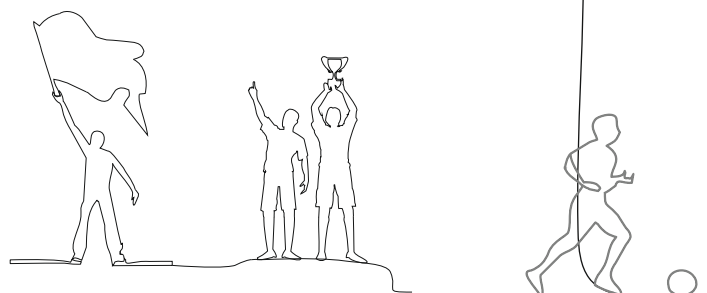




## ARCHINOVA

The students look forward to our annual festival, Archinova, since the beginning of the academic year. This is the chance for students to come together each year to plan guest lectures, seminars, quizzes, on-the-spot sports, treasure hunts and cultural nights.

ARCHINOVA





# ARCHITORQUE

## SPORTS

Our students engage in athletic events in our annual fest tournaments and intercollege competitions. In the third instalment of Architorque which is held by our college, our team won against Baliram Hiray College of Architecture, Bandra.

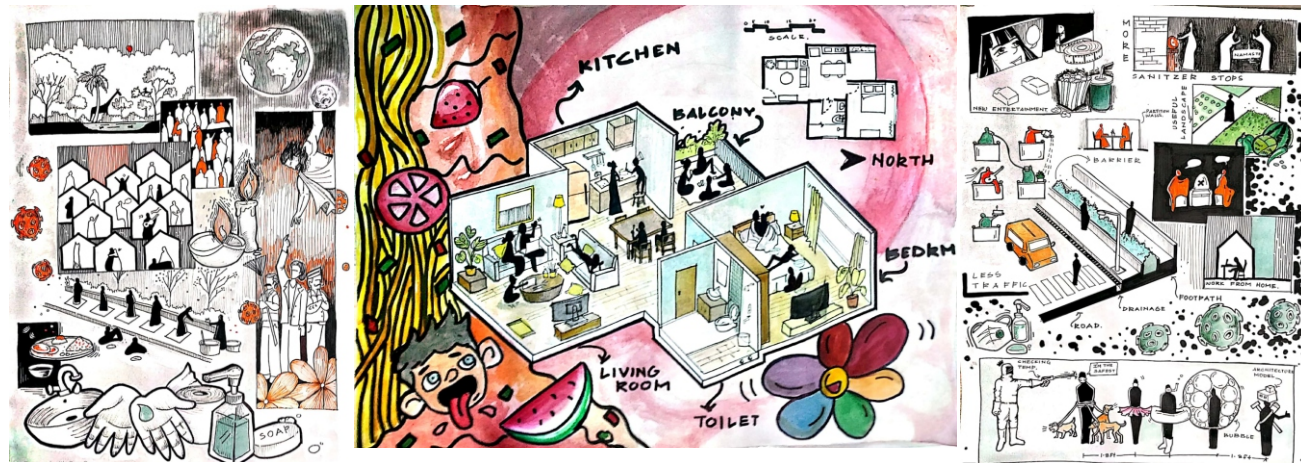


## CONVOCATION

After the inauguration of our college 6 years ago, the first batch of aspiring architects graduated with heartfelt reminiscence in February 2020 and shared their journeys with juniors. Christopher Benninger, a renowned architect, was invited as chief guest. He shared his experiences and wisdom with the students.







This lockdown has inspired me to make good use of time and participate in competitions organized by Asmita College. It was a three-day sketching competition with connecting topics. This made me think of things which could become a 'New Normal'. Now we are in a phase where we don't have any idea if this lockdown will end sooner or later. We all hope that everything gets back to normal but, will this normality be the same as we have experienced till now? Work from home has now been brought into play at a large scale to maintain social distancing. Other than that, the importance of proper sanitization of our surroundings, houses and edibles has also increased. Such concepts are displayed through the sketches. In short, distancing will continue to be followed, the post COVID-19 period will encounter the 'New Normal' and social happiness will be revived as communities will reunite. Two of the sketches were selected as special mentions and one of it received a #Rank 2 in the competition.

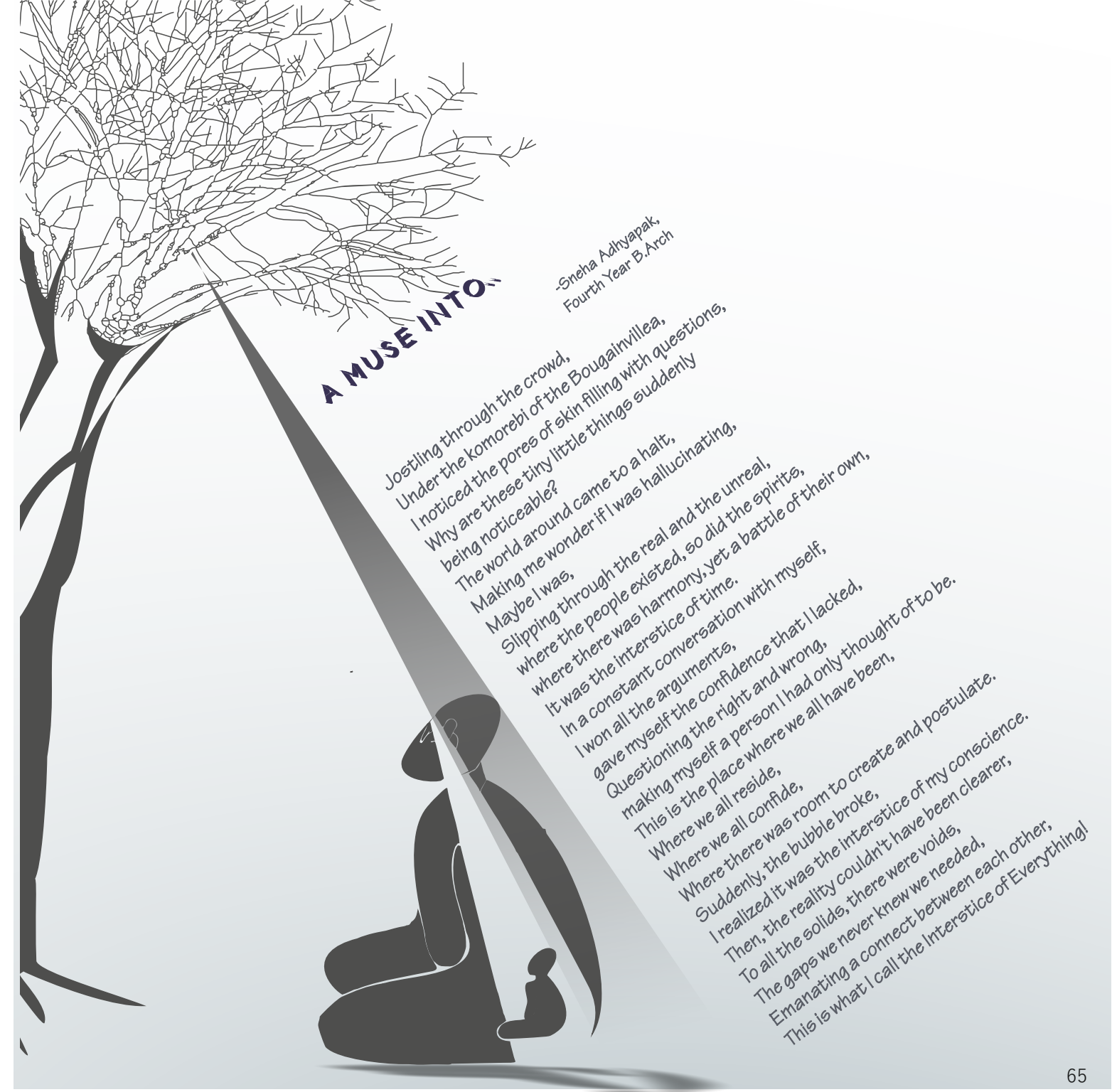
-Sahil Baria  
Third Year B.Arch

## LOCKDOWN VICTORIES



Lockdown was a chance to experiment with the skills I had. A poster design competition organised by Saraswati College of Engineering seemed to pique my interest. There was no category for submission. It was solely based on what the participant could create. The experience of my work being exposed to other colleges was enjoyable and to add a cherry on top, my work was selected as the winning entry.

-Vaishnavi Lokhande  
Third Year B.Arch



## A MUSE INTO

-Sneha Adhyapak,  
Fourth Year B.Arch

Jostling through the crowd,  
Under the komorebi of the Bougainvillea,  
I noticed the pores of the skin filling with questions,  
Why are these tiny little things suddenly  
being noticeable?  
The world around came to a halt,  
Making me wonder if I was hallucinating.  
Maybe I was,  
Slipping through the real and the unreal,  
where the people existed, so did the spirits,  
where there was harmony, yet a battle of their own,  
It was the interstice of time.  
In a constant conversation with myself,  
gave myself the confidence that I lacked,  
Questioning the right and wrong,  
making myself a person I had only thought of to be.  
This is the place where we all have been,  
Where we all reside,  
Where there was room to create and postulate,  
Suddenly, the bubble broke,  
I realized it was the interstice of my conscience.  
Then, the reality couldn't have been voids,  
To all the solids, there were voids,  
The gaps we never knew we needed,  
Emanating a connect between each other,  
This is what I call the Interstice of Everything!



## BEST POEM

### HOW TO KILL YOUR SPECIES

-Vishakha Gangar  
Fourth Year B.Arch

Sustainably for decades,  
But don't let it stop your  
Democratic masquerade.  
Your rivers, seas, and skies  
Pollute with barbarism,  
How else will you add  
The neo to liberalism?  
Those who oppose you  
Will scream "global  
warming",  
But brush away their ideas  
As economy harming,  
Center the entire species  
To stop the breathing  
Cut every single tree,  
Let the land be barren  
As far as eyes can see.  
And as the smog falls  
To choke every breath,  
Justify your murders as  
"Development" (to death).  
Where once were forests  
Now build a few dams,  
Displace the Adivasis  
But don't give a damn,  
They may have lived  
Around the stock market,  
But don't take stock of

Any environmental targets.  
Just take it in as death  
Springs out from the blue,  
It starts with other species  
But it will come for you.  
And as the climate tears  
Your civilization apart,  
Dearest, let toxic pride  
Pollute your stony heart,  
For despite the violent end  
Of your earthly odyssey,  
Your species once had a  
Bazillion dollar economy.



**BACK TO NATURE SAVE THE FUTURE**

## BEST POSTER

-Nikhil Yadav  
Fifth Year B.Arch

## BEST POEM

### WE WILL PAY.

-Semtika Maurya,  
Fifth Year B.Arch

From pinch of your soil eroded to the long-lost teeth of your kid,  
From taking away milk of milch to the stolen nectar of the bees.  
Where do these stay? We say under our feet.  
For, there's a count of all which has been ignored, but you do keep.  
The dipped-out seeds forced to produce the meat to the  
separated kid off the reef.  
Sinking deep under your debt. Can even pay for it?  
But you still keep trusting, how foolish!  
We snap your exhaustion and feed our desires.  
Where does it come from? Your Thick-skinned attire.  
As here we believe that we will pay with one-time check.  
But will you really accept the unknown friend request?  
Because there's a pun we always make of truth,  
as it has unwonted transparency and shitty attribute.  
Human we call ourselves - a gift of parasite to you.  
Carving away your scalp we wish to fly above you.  
Shredding away your streams in which we poop too.  
For all those still laughing upon this, this is a joke I know.  
Meme this too at the end it's a pun.  
We will pay? Still remains unanswered then and there.

## EARTH DAY

CTESCOA celebrated 'World Earth Day' during the lockdown. The significance of this day was reflected in a competition which included poster making, essays and poems. Students shared their work through digital communication. Through these competitions, faculty and students could stay connected during the lockdown.

## BEST POSTER

-Yugandhara Bonde  
Third Year B.Arch





## EARTH DAY-BEST ESSAY

-Nadiya Siddique,  
Third Year B.Arch

### ARE WE THE ASTEROID?

Life on earth appeared as early as about 3.77 billion years ago. That is soon after the formation of the oceans. Since then the plane is bursting with life. There are about 391,000 species of vascular plants currently known to science, of which about 369,000 species (90%) are flowering plants and 8 million species of animals out of which about 29%

are marine animals, 18,000 bird species and 6.5 billion on land.

Water/oceans covering about 70% of the total surface area more life is supposed to be flourishing deep into the oceans. So far, Earth is not the only planet that might have life, according to a lot of scientist the moon, mars, Enceladus (Sixth largest moon of Saturn) and many other moons/planets may have or had life, in the form of microbial unicellular organism. Life may not be something very unique in this universe, yet, Earth is the only place known to hold intelligent life. The evolution of life on this planet was very rough with extinctions of many species and mass extinctions, Earth faced about 5 major mass extinctions and about 20 mass extinction overall each having a unique reason of its own. A mass-extinction is a sudden death of almost all forms of life on the planet. Human activities have pushed the extinction of many birds, marine animals, terrestrial animals, and plant species. Since the industrial revolution, global temperatures have increased and have created multiple sub issues. It has become

difficult for other life forms to co-exist with other human being. Will humans be responsible for the next mass extinction? Since the industrial revolution, the human impact on the global climate has drastically increased, the invention of new technology in transportation, communication, agricultural and industrial sectors led to more use of carbon fuel. New

industries led to more carbon emission into the atmosphere.

Deforestation, expanding agriculture,

illegal fishing, hunting, unplanned tourism and pollution by pesticides have also caused a progressive deterioration of natural habitats. The consequence is loss of bio-diversity, destruction of forests and impacts the wild-life. Rapid increase in global temperatures have caused acidification of the oceans, which does not only impact the marine life but also causes major change in ocean currents. About 50% of the oxygen we breathe comes from the oceans and the rest comes from the forests/tress. Increase in ocean temperatures not only kills the marine life but also makes it different for the plankton to produce oxygen. Due of unregulated fishing, marine animals are led to extinct. Great white sharks have survived the 5 major extinction but they are not able to survive humanity, the great whites are now on the red list. Manta rays are rumoured to cure cancer in china thus resulting in the unregulated hunting of the fish causing it to drop down in the red list. About 27% of the total animals on this planet fall in the red list,

out of which 41% are amphibians, 25% are mammals, 34% are conifers, 14% are birds, 30% are sharks and rays, 33% are coral reefs and 27% are crustaceans. Natural selection does talk about extinction of the species not fit for the environment, but according to recent research human being have increased the speed of this extinction by 1000% faster than it should've been. Global increase in temperatures has resulted in the melting the glaciers, thus increasing sea level and affecting global climate leading to natural calamities and unexpected weather patterns.

But there is always hope right? the light at the end of the dark tunnel? in this case, there is just not enough to light the whole burrow. Boyan slat, an aerospace engineering student that has been building systems and testing them to clean the great pacific patch. Green peace, an international organisation that has been working on reducing the use of plastic and other non bio degradable

substances globally. National geographic, discovery channel, united nations and many others have taken initiative to spread aware on climate change.

2019 had reports of forest fires in the Amazon and in Australia which had major consequences. In 2020, the human race is facing the virus pandemic. Our greed for flesh and false cures has led the virus from its natural quarantine to the human body. Getting our roots deep into nature and not learning the art of coexistence has led us to this global lockdown where we suffer not only because of the disease but also, the increase rate of unemployment, hunger, racism, travel bans, low global economy. Nature seems to be glowing while we stay inside. Dolphins are back on shores, birds chirp louder, penguins roam free and bears are rolling on the roads. If the forest fires were not enough, the hurricanes did not scare us enough, if the heat was not enough will the virus be enough?



## FORGOTTEN OBJECTS



Srinivas Tele  
Third Year B.Arch

## FLORA



Darshan Waghmare  
Second Year B.Arch

## HOME



Yashashree Parab  
Second Year B.Arch

## MY SPACE



-Shrutika Keluskar  
First Year M.Arch

# SHUTTERBUGS

Shutterbug was a photography competition that was held by the college. Eight themes were given, based on which photos had to be submitted. What made this competition special was the idea of exploring the world while being locked in your house. The competition also enabled the vision of surveying one's residence in a new way.

## CO-EXISTENCE



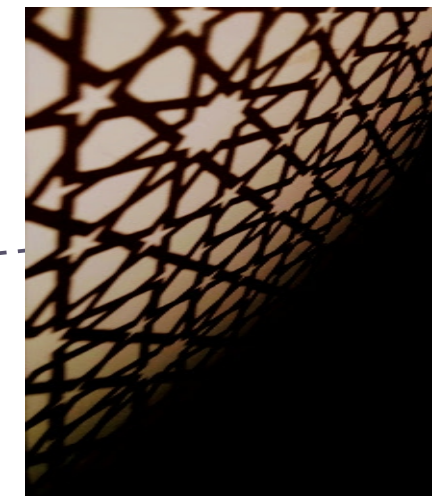
Sahil Kalan  
Second Year B.Arch

## MATERIAL AND TEXTURE



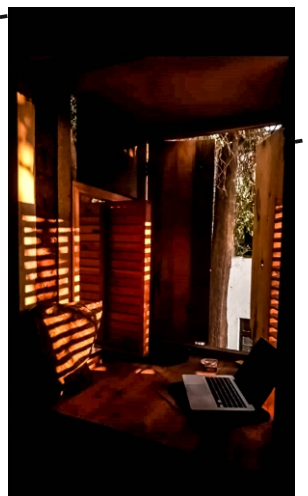
Samidha Kambli  
Fourth Year B.Arch

## LIGHT AND SHADOW



Yashashree Parab  
Second Year B.Arch

## SPACE AND TIME



Srinivas Tele  
Third Year B.Arch





## THE POWER OF OKAY

-Sasha Rana  
Second Year B.Arch

In the current scenario where the world feels like a biblical extraction, mental health has been given the recognition it deserves. The deprivation of touch and warmth, restriction of seeing your loved ones, interaction has been reduced to nothing but a fantasy. The stress and the ability to cope in these times for some people is high and this is just one factor which spills the jar of sanity.

Students are not exempt from the cases of mental health skyrocketing. These times have created a foundation of digital platforms from where education is redeemable within a click. However positive the digital platform may be for a few, the negative hovers and gives birth to a very toxic relationship between the student and teacher. The need and curiosity to have one's thoughts processed and validated is sometimes overwritten or locked up within oneself. These thoughts keep rusting and damaging the individual's confidence and caliber to a point until there is no anchor left to climb back into reality.

In light, students pursuing professional courses are highly susceptible to mental health crises. The chaotic environment, work stress, long duration of work leading to mental exhaustion and fatigue is something everyone faces. Not to forget the reflection of creativity in a project and countless factors that drains students out.

Reaching out to professionals in these situations is the safest thing to do. Seeking help is often accompanied with a blanket known as stigma and shame in today's society. These conditions should never allow anyone to hesitate from getting help. The activity of pushing people to receive a helping hand to unload their emotional baggage needs to be promoted. The requirement for stability cannot be achieved at the eleventh hour and the necessity to rewire the turmoil in the brain should never be kept for the end. The mound of unexpressed strings of words will advance to breakdown and eventually isolation.

Vulnerability is as important as being courageous. As humans, we are able to process and function as per our emotions and produce output accordingly. No matter how beautiful it is or how efficiently space is distributed within it; if the foundation is not strong it will subsequently crash and this crash will affect the nearby buildings, our loved ones, too. Hence, we need to realize that not only do people lose those who are dear to them but also get emulsified in the never-ending bubble of pain and trauma; which is no different than the feeling of an overflowing jar of sanity. And the cycle repeats until they put it to a stop and get help.





The art of drawing and painting has been with me since I was a kid. The journey to work more towards this hobby started by monthly sketching challenge Inktober. Medium of my artwork has covered all ranges be it alcohol markers, water colours, pastels etc. This pandemic where the world had stopped suddenly, made me think about all the emotions that we kept bottled up. This was the time where me and my fellow mates rebuilt our trend to make art as a medium expression. This is my way to fill emptiness of my expressions. I am a designer of my emotions.

- Tirtha Sawase  
Third Year B.Arch



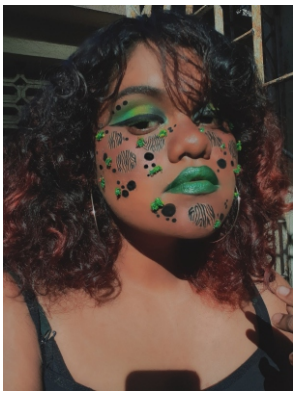
Painting has always been an escape since childhood. But as we grew, this path vanished somewhere. Though not being able to paint something for a long time, I never lost interest in it. This lockdown has been that discontinuation to search this way again. Canvas painting, knife painting, illustrations and much more now stays on the art page. And the art page stay appreciated by my fellow mates making me to do more and motivate others to do the same! This is my way to be a designer! Designer of my ideas.

Isha Rajiv,  
Fourth Year B.Arch



"The living space affects the mind of the living" this statement has come true during the pandemic, since I started planting, I have become patient, loving and stress-free person. I began with a coffee mug and 2 stems of cuttings of a Neon Pathos, now I have 70 pots and 31 different species of plants. Looking these lovely plants blossom has made my space feel relaxed, comfortable and of course pretty! Now I see any recyclable material as an item in which I can plant to make my collection bigger. It really gives you a sense of kinship as you see them growing and blossoming each time you love them, sit beside them, or even chat in many cases, when they feel loved and taken care of, they grow much faster. And after this pandemic end, I intend to continue this hobby.

-Kevin Choudhary  
Fourth Year B.Arch



Makeup is an art I was drawn towards a few years ago. It fascinated me how versatile it can be and how much potential it holds. What made me interested in it even more is how a face can act as a canvas and that no two canvases are alike. I use different mediums to curate a look, it's more editorial and creative than everyday makeup looks but that makes it an even more fun experience. It has become an outlet where I can express myself and my emotions.

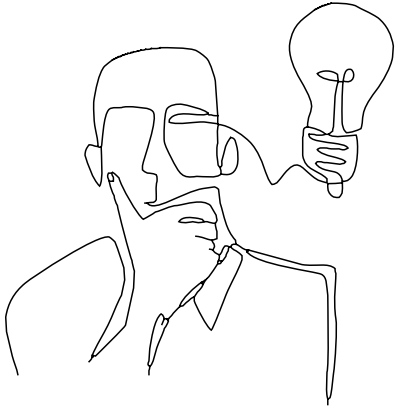
-Angela Anthony  
Fourth Year B.Arch

# DESIGN MORE THAN SPACES



I'm always passionate about design, whether it's architecture, mode or footwear. This lock down has reintroduced my ideology to the world of fashion design. Fashion's linear evolution has become obsolete, so it's time to stray. The philosophy is to be unique. Forms or materials underline the idea of inculcating hyperfunctional fashion. The sneakers express the idea of deviation. For a homeless person with everything that is functional and needs, while the other individual is inspired by our human body. The nervous system is attached to the skeleton, muscles and skin. The best way to feel textures and forms is to design fashion.

-Dev Ashar  
Third Year B.Arch





## ARCHIBRIGADE

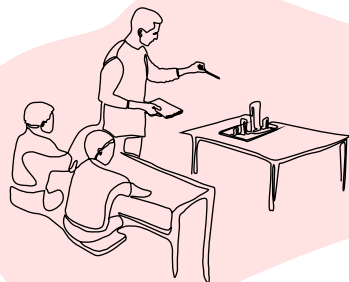
### B. ARCH

Prof. Alka Tawari  
 Prof. Anuprita Surve  
 Prof. Tanvee Joshi  
 Prof. Sunanda Satwah  
 Prof. Mitali Hindlekar  
 Prof. Harshada Punde  
 Prof. Sayli Paranjpe  
 Prof. Lakshmi Harikumar  
 Prof. Pooja Shah  
 Prof. Kirti Desai  
 Prof. Divya Subramanian  
 Prof. Nisha Kundar  
 Prof. Shefali Naik  
 Prof. Tanmayee Wagle  
 Prof. Mrunmayigauree Nandgirikar  
 Prof. Sukesha Ghosh  
 Prof. Mitali Harmalkar  
 Prof. Prachi Sharma  
 Prof. Awani Sabnis  
 Prof. Iravati Nath

### VISITING FACULTY

Ar. Bobbie Vjaykker  
 Ar. Gayatri Narkar  
 Ar. Anju Kapoor Bareja  
 Ar. Swati Desai  
 Ar. Nikhil Sahani  
 Ar. Prerna Damani  
 Ar. Rahul Chemburkar

Ar. Rashmi Pookkottil  
 Ar. Geeta Barve  
 Ar. Abhijit Sawant  
 Ar. Sarvesh Nandagirikar  
 Ar. Deyasini Choudhuri  
 Ar. Durvesh Mhatre  
 Ar. Neethulakshmi  
 Ar. Divya Butala  
 Ar. Abhilasha Khatri  
 Ar. Neha Chavan  
 Ar. Swati Das  
 Ar. Preeti Kolambekar  
 Ar. Harmeet Chawla  
 Ar. Shreya Nagrath  
 Ar. Prajakta Gupte  
 Ar. Narendra Parpudi  
 Ar. Jyoti Kokne  
 Ar. Jignesh Panchal  
 Ar. Amrita Rajput  
 Er. Amodh Luman  
 Er. Suma Evani  
 Er. Parag Sangekar



### M. ARCH (PROJECT MANAGEMENT)

Prof. Alka Tawari  
 Prof. Pushpagandha Shukla  
 Prof. Umesh Mallya  
 Prof. Shweta Parab Ekawade  
 Prof. Dhaval Ghare

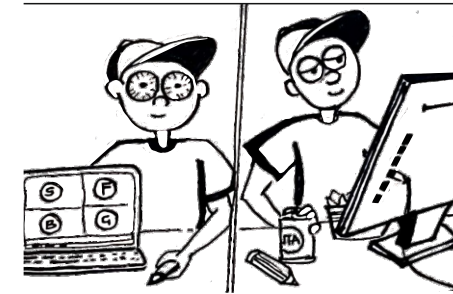
### VISITING FACULTY

Ar. Advait Joshi  
 Ar. Sonali Patil  
 Mrs. Sonal Satelkar  
 Ar. Maneesha Sharma  
 Ar. Santosh Deodhar  
 Ar. Arvind Shrinivas  
 Ar. Balkrishna Kulkarni  
 Er. Shirish Deshpande

### ADMINISTRATIVE STAFF

Ms. Supriya Mantri  
 Mr. Dhiraj Chogale (Librarian)  
 Ms. Chetana Mohite  
 Ms. Vaishali Dighe  
 Ms. Aarti Nimbore  
 Mr. Ibrahim Mulla  
 Mr. Parshuram Sodaye  
 Mr. Sagar Patil  
 Mr. Akshay Satvilkar  
 Mr. Dhananjay Khale

me watching a 45 min class      me watching 6 hours stream

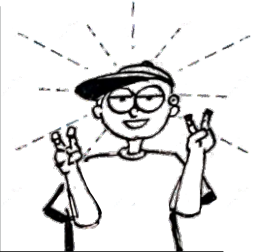


**REALITY CHECK**

When teachers start asking questions after teaching in online class



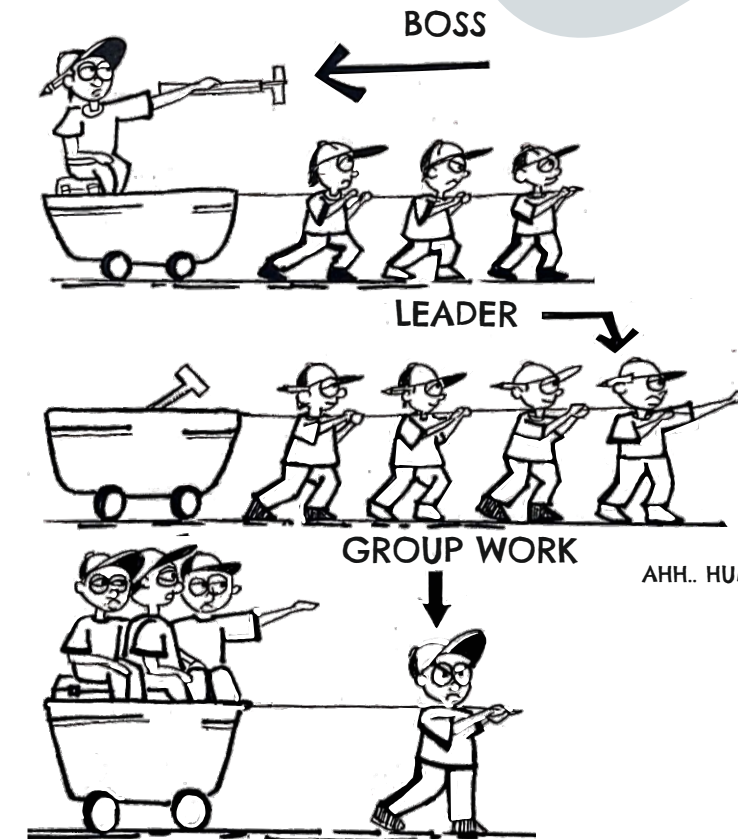
I don't "work better under pressure"



it's just the only time I'll work

Seeing student memes be like:

AHH.. HUMOR BASED ON MY PAIN







**CULTURAL**  
Sandhya  
Gharde  
(3<sup>rd</sup> Year)

**TREASURER**  
Nadiya Siddique  
(3<sup>rd</sup> Year)

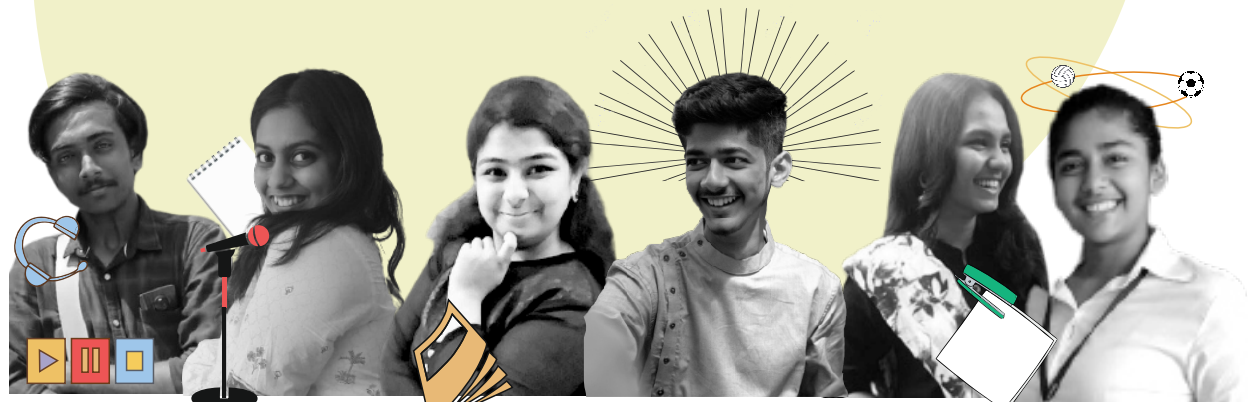
**GRAPHICS**  
Disha Dabke  
(3<sup>rd</sup> Year)

**INFRASTRUCTURE**  
Somshankar  
Katgaonkar  
(3<sup>rd</sup> Year)

**NASA**  
Aditi Nikam  
(2<sup>nd</sup> Year)

**NASA**  
Rushabh Sanghvi  
(3<sup>rd</sup> Year)

## STUDENT COUNCIL



**VISUAL MEDIA**  
Sanskar Jadhav  
(3<sup>rd</sup> Year)

**ACADEMIC  
EVENTS**  
Isha Salvi  
(3<sup>rd</sup> Year)

**PUBLICATION**  
Grishma Vasani  
(3<sup>rd</sup> Year)

**GENERAL SECRETARY**  
Soham Kashikar  
(3<sup>rd</sup> Year)

**EXHIBITION**  
Nupur Naik  
(2<sup>nd</sup> Year)

**SPORTS**  
Aparna Rai  
(3<sup>rd</sup> Year)



Fahad Kagdi  
Graphics Illustrator



Shubhangi Kumar  
Asst. Publication Head



Grishma Vasani  
Publication Head



Noor Fatima  
Content Editor

## EDITORIAL TEAM

Sanskriti Lad  
Graphics Illustrator



Bhavesh Patere  
Graphics Illustrator



Durgesh Choudhary  
Graphics Head



Garima Sakwar  
Content Editor



**FACULTY ADVISORS:**  
Prof. Lakshmi Harikumar  
Prof. Pooja Shah

We thank our Principal, Faculty Members and non teaching staff for their co-operation, guidance and support towards AAVARAN 2020. Also a huge shout our friends- Sahil Kalan, Manav Shah, Darshan Waghmare and Nupur Naik.